



COOLMAX

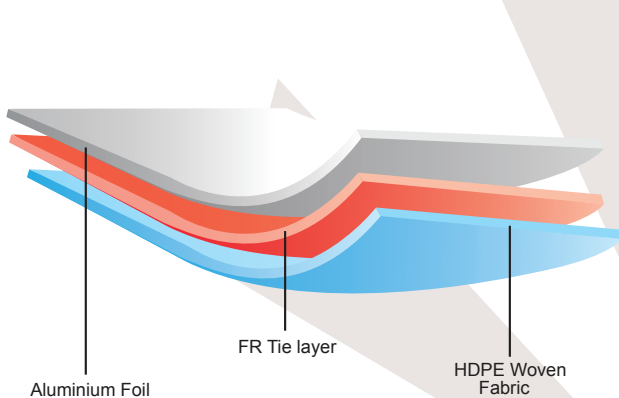
THERMAL REFLECTIVE INSULATION

CF1 FR (FRAL 1)



The CoolMax FRAL 1 (Product Code: CF1 FR), consists of 3 layers laminate made up of a single sided reflective aluminium foil, bonded to reinforce high density polyethylene woven fabric by special fire retardant material.

Structure of Insulation



Key Benefits



Good Thermal Performance
Reflects up to 97% radiation heat.



3 In 1 Protection
Provides a protective insulation barrier, radiant barrier and water resistant membrane.



Fire Retardant
Achieved "class 0" classification and all international standards.



No Health Hazard Fiber Free
Anti bacterial, anti fungal, and non-asthmatic. Poses no health and safety risks.



Easy Installation
No wire mesh, no additional protective film, light weight, fast and simple installation.

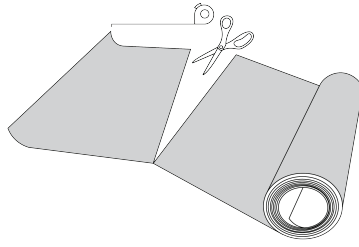
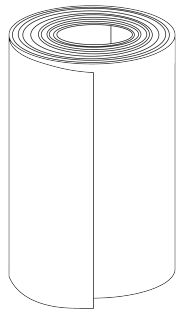
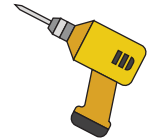


Energy Saving, Cost Saving
Reduces cost of energy consumption on thermal comfort such as air-conditioning.

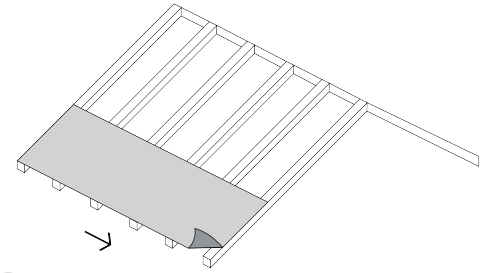


Installation Guide

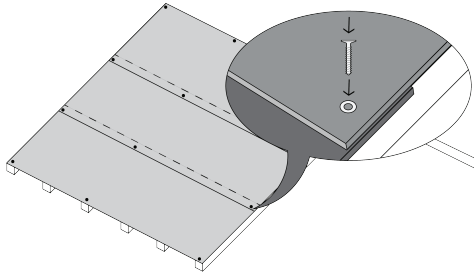
For Roof Tiles



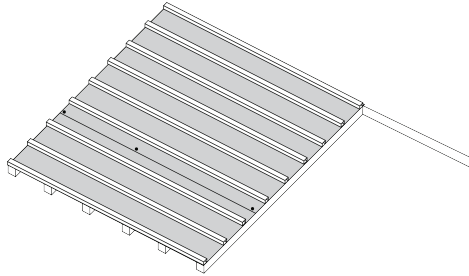
1 Unroll the COOLMAX foil and cut the length required.



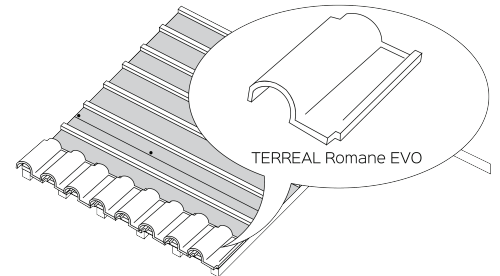
2 Starting from the rafter edge, lay the COOLMAX foil across.



3 The dotted line represents the overlapping requirements (min 50mm). Fasten the COOLMAX foil to the rafter by screws and washers. Screwing is recommended for every 8ft distance.



4 Install the batten on top of the COOLMAX foil according to the roof tile manufacturer's recommendations.



5 Install the roof tiles on top of the batten. Clay roof tiles are recommended for optimal roof performance.

Technical Specifications

Property	Units	CF1-FR
Layer Description		Aluminum Foil/FR Tie Layer/FR Woven Fabric
Nominal thickness	mm	+/- 0.13
Grammage	Gsm	+/- 122
MS2095:2014 (SIRIM)		
Resistance to Dry Delamination	AS/NZS4201.1	Pass
Resistance to Wet Delamination	AS/NZS4201.2	Pass
Shrinkage – Machine Direction & Lateral Direction	AS/NZS4201.3	Pass
Tensile Strength - Machine Direction (AS/ NZS1301.448s)	kN/m	<9.5 >7.5
Tensile Strength – Lateral Direction (AS/NZS1301.448s)	kN/m	<7.5 >6.0
Edge Tear Resistance - Machine Direction (TAPPIT470)	N	>300
Edge Tear Resistance - Lateral Direction (TAPPIT470)	N	>300
Vapour Barrier (ASTM E96, Procedure B-Wet Cup Test)	ug/N.s	Medium
Emittance (ASTM C1371)	e	0.02
Surface Flame Spread (BS 476:Part 7)		Class 1
Fire Propagation Test (BS 476:Part 6)		Class 0



Scan with your smartphone to visit our website!



TERREAL MALAYSIA SDN BHD (202237-P)
 NO. 39 & 41-1, Jalan TPK 2/8, Taman Perindustrian Kinrara,
 Seksyen 2, 47180 Puchong, Selangor Darul Ehsan.
T - (603) 8075 4010 / 4020 / 4060 **F** - (603) 8075 1090
E - contact@terreal.com.my www.terreal.com.my