

Glavloc[®]
BUILD SYSTEMS

Glavloc[®] designs and supplies quality energy efficient Child Care buildings at affordable prices.





A quality alternative to the temporary portable cabins of the past

Passive Standard



High performance Fully certified Buildings



G-loc Zero wall with insulated Passive foundation



Fast build Completed in 3-12 weeks



Architectural Designed Buildings



T: +353 21 486 8155

E: info@glavloc.ie

W: www.glavloc.ie



Childcare Buildings

Glavloc helps childcare facility providers increase their space quickly to cater for the surge in demand for nursery places. Glavloc will design and build a bright, warm and welcoming permanent building with plenty of windows and space for the children to move freely in.

We provide a conception to turnkey service, supplying you with planning drawings and supporting you through every step of the process.

Our pre-designed childcare buildings are flexible and can be adjusted to better suit your requirements and budget. Alternatively, we can custom design a unit to your exact specifications.

Innovative building system

The revolutionary Glavloc building system has taken energy efficiency, build time and quality to a new level. Using the latest technology, Glavloc building's are designed in component form, allowing buildings to be delivered to site and completed to a builder's finish in 12 weeks without the need for heavy lifting equipment.

Efficiency

Our buildings are constructed to achieve an A BER rating and are passivhaus compliant. All walls are engineered for enhanced energy efficiency using the Glavloc wall system. Glavloc's unique patented insulated wall system eliminates thermal bridging.

With the introduction of quality certified double/treble glazing, and air handling systems, childcare building owners can achieve substantial energy savings.



"We moved in, the building was warm, cosy and bright, it performs really efficiently, needs surprisingly little heating."

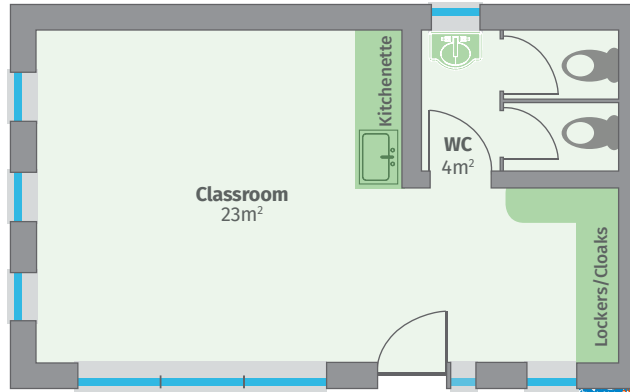
Orla Hayes

Cloud 11



- 7.6m x 4.6m
- 1 classroom for 11* children
- Total ground floor area 29m² (312 Sqft)
- Classroom total floor area 23m²
- €42,500

*0-6 year old children 1.818 m2, sessional session maximum of 22 per room Child Care Act 1991 as amended by the Child and Family Agency Act 2013

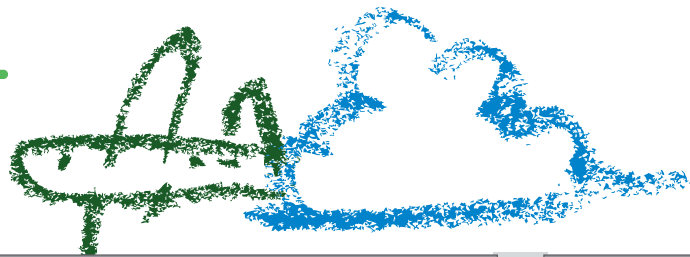


"I am delighted with the quality, standard and workmanship of this building".

Oliver Sheehan

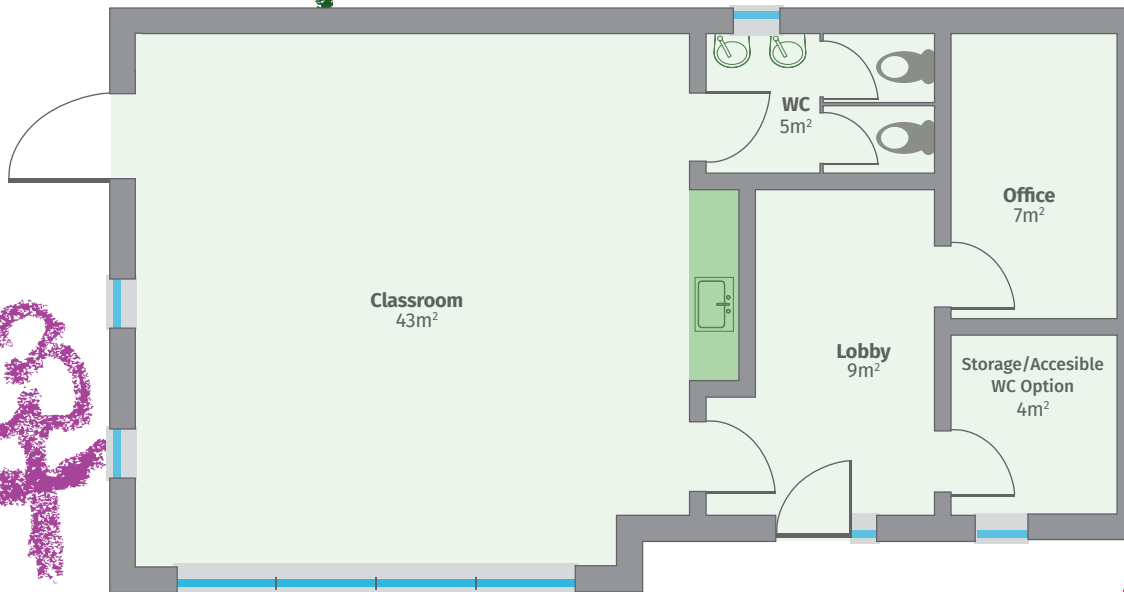


Sunshine 22



- 12m x 6.7m
- 1 room creche for 22* children
- Total ground floor area 73m² (786 Sqft)
- Classroom floor area 43m²
- €69,900

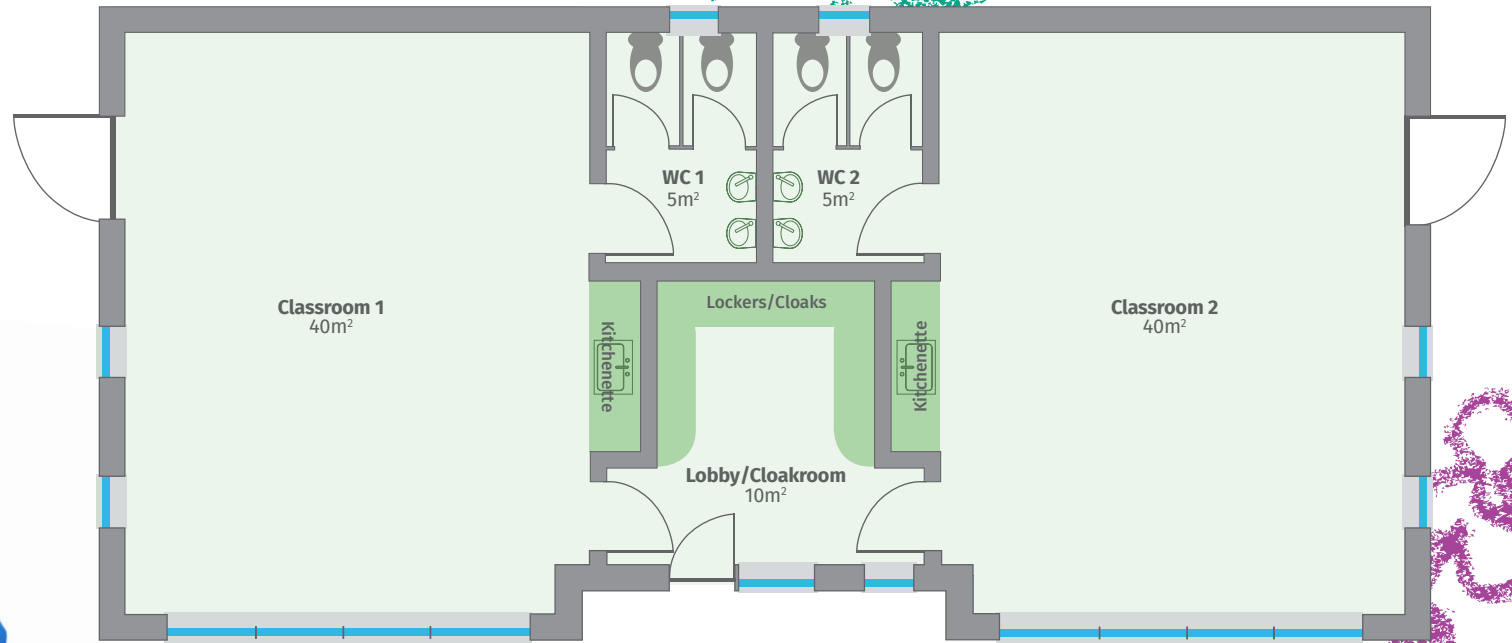
*0-6 year old children 1.818 m², sessional session maximum of 22 per room Child Care Act 1991 as amended by the Child and Family Agency Act 2013

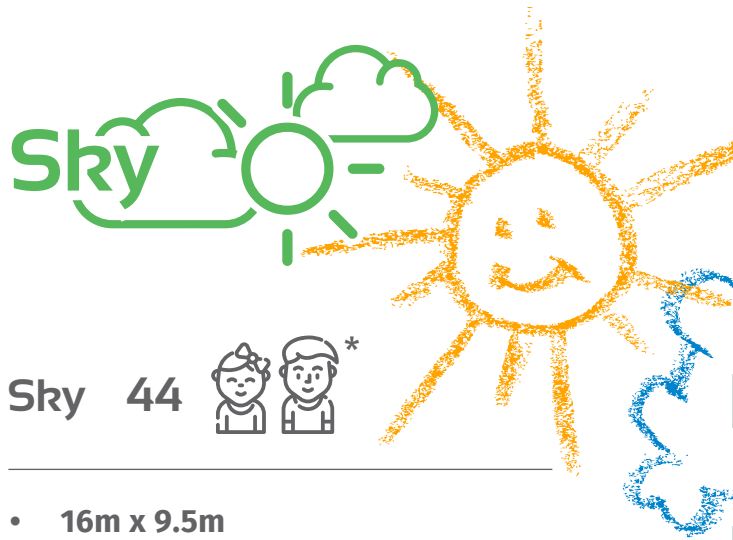


Rainbow 44

Rainbow

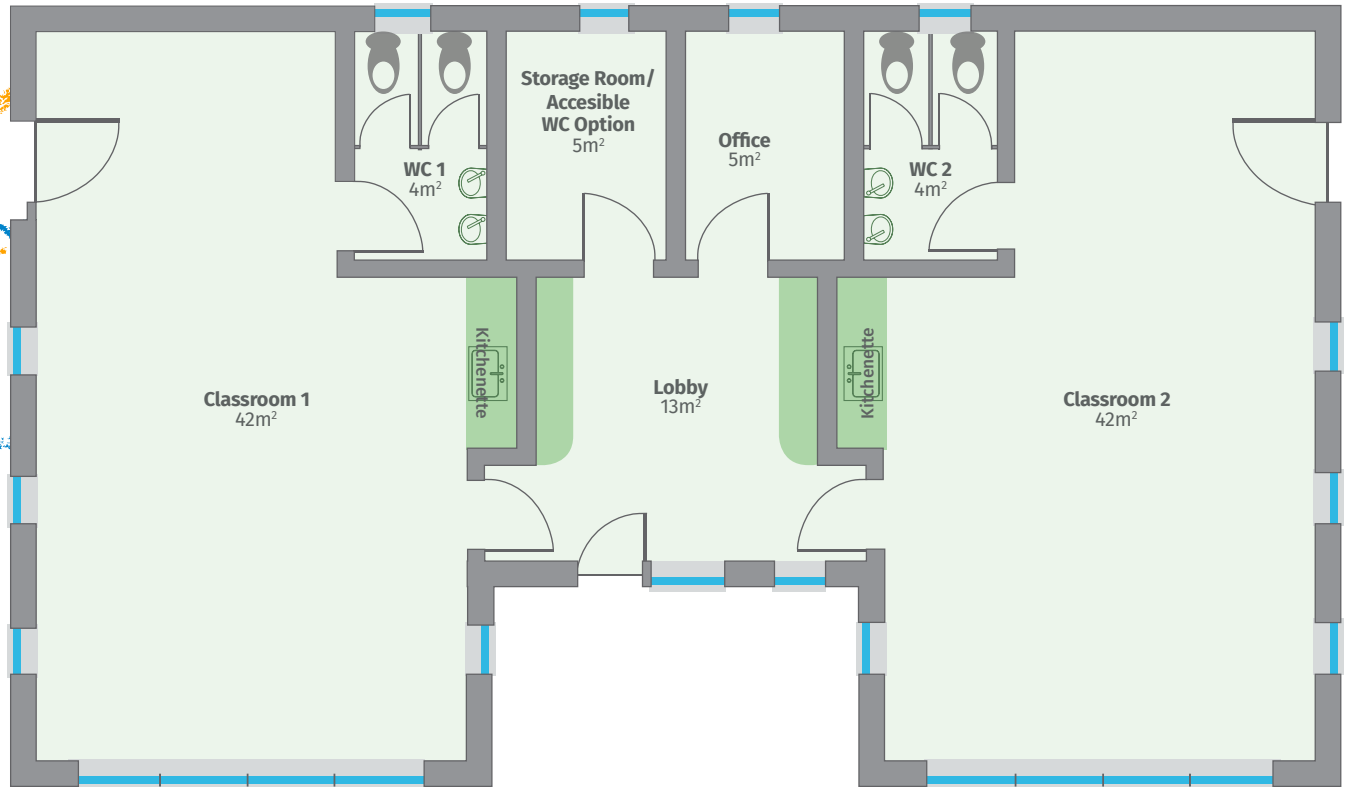
- 16m x 7.5m
- 2 room creche for 44* children
- Total ground floor area 107m² (1152 Sqft)
- Each Classroom floor area 40m²
- €99,500





Sky 44 

- 16m x 9.5m
- 2 room creche for 44 children
- Total floor area 125m² (1345 Sqft)
- Each classroom 42m²
- €118,900



'I am delighted with the quality, standard and workmanship of this building.'

Oliver Sheehan



Case Studies

• Customer: All Aboard Childcare Centre

All Aboard Childcare centre did not have enough space to cater for the huge demand created by the new Governments scheme to provide free nursery places for three to five year olds and were turning away customers.

All Aboard Childcare needed an energy efficient permanent building with two classrooms that could be built in 4 weeks in time for the September Preschool year. Orla Hayes, the All Aboard Childcare manager says: "When I needed extra space, I put Glavloc under huge pressure. We had a deadline and Glavloc made it.

We never expected this building to be so warm, cosy and bright". This unique childcare facility was designed based on the pre school's requirements and budget. This building contains two large open-plan classrooms with two toilets in each classroom and a lobby and storage area. Large windows with low window sills create a very bright space. Double doors open into a secure playground area. The design of this building makes great use of space and attractive exposed trusses on the gable ends under deep eaves, create depth and architectural interest.



• Customer: Midleton Montessori & Pre-School

Midleton Montessori & Pre-School needed to relocate and was offered a site in the Midleton Rugby ground. Various quick solution options were considered but portable cabins were too utilitarian for their requirements. They wanted a permanent building that was affordable and could be built fast. Glavloc was appointed by the contractor to manufacture and install the build system using

designs produced by Cashman Patrick Architects. The child care building consists of 2 large classrooms with a kitchen and dining space, accessible toilets and storage space. The building is unashamedly modern and uses angled roof pitches on each side of a flat roof foyer. A mixture of cladding and render finishes breaks up the elevation, and gives it a 'wow' factor.



• Customer: Mary Geary's Childcare Centre

Mary Geary's Childcare planned to extend their outdoor learning facilities for pre-schoolers and so required a forest classroom. This building was designed to fit into its local environment and consists of a simple room with a large glazed area. Externally, it is clad with pressure-treated Scandinavian Spruce and has been built to a BER A1 standard. The forest classroom has been designed as a modular unit that can be easily moved. It was constructed in the adjoining car park, but will be lifted into its final environment in the woods at the end of this year.

This building was completed in 5 days and is built to Department of Education specifications. Oliver Sheehan, Company Director says: "I am delighted with the standard and quality of workmanship of this unit. It's both beautiful looking and energy efficient. The service we were provided with was second to none". Oliver was so impressed with this unit that we are currently on site installing a second permanent unit for him.



Quality

Glavloc is dedicated to building the best quality child care facilities at affordable prices. Glavloc Build Systems include:

- Certified sustainable wood and ecologically compatible building materials, sourced from Coillte
- Prefabrication on CNC controlled machines guarantee precision on all constructional components
- High load carrying capacity and stability due to the unique construction method of OSB board and wedge components
- The wall system consists of 3 functional layers providing maximum thermal function
- Site checks carried out by Glavloc and externally appointed engineers.



Our Glavloc child care facilities include

- Roof type: Pitch or flat roof
- Digital electric heating, optional underfloor heating
- Air handling unit
- External paths
- Internal builders finish
- Sanitary ware, doors, architraves, window boards, skirting
- *Optional turnkey package includes kitchen, flooring, tiling, painting and built in storage.

All certifications including

- Foundations and full structure
- BER thermal assessment, guaranteed A rating.

Glavloc 10 Year
Structural Guarantee

