



# 2plus4 Interior Design Portfolio 2018

---

2016—2017 CHINA INTERNATIONAL ARCHITECTURAL  
DECORATION AND DESIGN ART FAIR AWARD

# Index

Team Member  
Team Structure  
Our Design Concept

Latest Projects

- Office Complex
  - School
  - Mall
  - Retail
  - Office

Scope of Work  
Contact

# Member Introduction



## **Clovia Cheung** Creative Director

Worked in the interior design field for over 15 years with different projects, such as corporate office, commercial complex, retail, mall, KTV, and hotel project. Strong experience in design and construction in Hong Kong and mainland China.

Aim to focus on Eco friendly and sustainable interior design. In creating a new design, we end up wasting so many non-recyclable materials, such as natural stone and non-sustainable timber. However, we can change this practice by embracing other recyclable and sustainable materials to achieve the same result. Green interior design is to help everybody to achieve a greener, high technology and healthier lifestyle. Design style is humanity, good at using things around as a design concept.

## **Project Experience**

### **Hotel**

TJ Shangri-La  
Intercontinental Hotel, Foshan  
Hotel of Primus Hotel (SH)  
Hotel of Venetian hotel smoking solution project  
Sales Office of Showroom and Mock-up room of Greenland Holding Group (Changsha)

### **Mall**

Ruibo Lujiazui Shanghai Mall  
SC Mall design concept (Long for)

### **KTV**

Hanting Hotel Haikou Mingzhu Plaza  
Goodtime pudong yaohan branch (SH)

### **Retails Project:**

Giorgio Armani (Hong Kong, Beijing, Shanghai, and Tianjin etc.)  
Coach Leather ware (Hong Kong)  
Nike Store (Hong Kong)  
Broadway Photo Supply Limited (Hong Kong)  
il Colpo Group Hair Stylish (Hong Kong, Shanghai)  
HK Electric (Hong Kong)

### **Office**

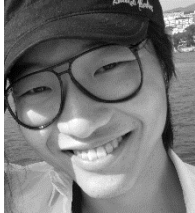
Giorgio Armani's Headquarter (Hong Kong)  
Broadway Photo Supply Limited's Headquarter (Hong Kong)  
Conair Far East Limited's Office (Hong Kong)  
DDB Worldwide Communication Group Inc. Office (Hong Kong)  
SML Group Limited (Hong Kong, Shenzhen and DongGuan)  
Maxus's Office (Hong Kong)  
Group M Inc's Office (Hong Kong)  
DHL NAH Office (SH)  
Premier Asia(SH)  
Pfizer(HK)  
Publics (HK)  
QSI(SZ)  
Huawei Office Complex (Wuhan)  
Green Town office complex (Ningbo )

### **Residential**

Dubai House  
Mei Po House  
Way Gin Garden, Tsing Yi Residential  
Private Residential (SZ)

# Member Introduction

## Hama Lai Design Director



He has over 13 years interior design experience in Hong Kong and Mainland China. Mainly in hotel, F&B, office and retail project. He believes that we can develop a better design business system. You can't ask people to change; but yourself. Highly tailored to clients needs and innovative design, refreshing. Now feel the weight and proper use of color as one of his design features.

### Retail

Little mermaid (Hong Kong)  
Royce (Hong Kong)  
Citysuper Cashier(Hong Kong)  
Ocean Optical (Hong Kong)  
Garden (Hong Kong)  
Momose Co Ltd (Hong Kong)  
Affliction Clothing (Hong Kong)  
Berlin Optical (Hong Kong)  
Kingsglory (Hong Kong)  
Lucullus (Hong Kong)

### Project Experience

#### Hotel

Hart Hotel (Hong Kong)  
ASCOTT(Hong Kong)

#### Shopping Arcade

Argyle centre 1F eating location (Hong Kong)  
Argyle centre kiosk(Hong Kong)  
28 Marble Road Basement (Hong Kong)  
Smiling Shau Kei Wan Plaza(Hong Kong)  
Timeplus (Hong Kong)  
Kingswood Richly Plaza (Hong Kong)  
Sai Kung Centro (Hong Kong)

#### F&B

Mcdonald's (Hong Kong)  
Mcdonald's (Macau)  
Camlux Restaurant (Hong Kong)  
Fortune 28 Young (China)  
Maxim's(Hong Kong)  
Fusion Deli (Hong Kong)  
ChaCha (Hong Kong)  
Cooked Deli (Hong Kong)  
Little Mermaid (IFC Hong Kong)  
Hong Kong Day (Hong Kong)  
Chiuchau Garden Restaurant (Hong Kong)

#### Office

Mcdonald's(Macau)  
LungHing Office (Hong Kong)  
Emkay Industries (HK) Ltd.  
Mcdonald's (China)  
Indesore group office (Hong Kong)  
Mou Fung Office (Hong Kong)  
Sun International Resurces Ltd (Hong Kong)  
Citysuper Office (Hong Kong)  
MCATV Office (Hong Kong)  
Maxim's Factory (Hong Kong)  
FrieslandCampina Ltd. (Hong Kong)  
TaTa South East Asia Ltd. (Hong Kong)  
Citysuper Office (Hong Kong)  
China Airline(Airpoart HK)  
Kingsglory Office (Hong Kong)



# Member Introduction



## **Koka Ko** **Senior Interior Designer**

Koka Ko has 10 years experience in Hong Kong. He had a passion of design. The courage to receive new things, often looking for new materials to keep client fresh, so that they often have a pleasant and relaxed meeting, which can make people happy to work together. Solid design and project skills. Like to blend design with technology with modern style.

### **Project Experience**

#### **Casino Project:**

SAND COTAI CENTRAL – Casino Common Areas (Macau)

#### **Retails Project:**

FENDI (Hong Kong)

RALPH LAUREN (Hong Kong)

BANK OF CHINA HK Branch (Causeway Bay)

Jordan Austin Plaza (Hong Kong)

#### **Office Project:**

HSBC Headquarter Corporate floors (Hong Kong)

Ares Asia Ltd (Hong Kong)

HUTCHISON GLOBAL COMMUNICATIONS LTD. (Hong Kong)

ORD MINNETT (Hong Kong)

CPA GLOBAL (Hong Kong)

LI & FUNG (Hong Kong, USA, India, Turkey, UK, China)

Noble Group Ltd. (Hong Kong, China, Dubai)

PMN Capital Corporate office (Hong Kong)

#### **Showroom Project:**

Herman Miller (Hong Kong, China, India, Singapore)

LI & FUNG (Hong Kong)

#### **Residential Project:**

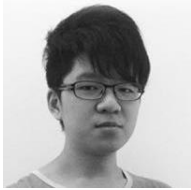
Gramercy (Hong Kong – Central)

Jade Beach villa (Hong Kong)

Vista Horizon (Hong Kong)

Villa Martini (Hong Kong)

# Member Introduction



## **Vinci Ma**

### Junior Designer

A dependable and conscientious junior interior designer. Design experience includes, Landscape, Mall, Financial Centre, Factory, and Residential Building.

A very reliable and serious interior designer, is a thinking-shaped designer. With good analytical skills and listening ability, it has evolved into a design direction and sought to gain more experience in design and space learning in different places.

### **Project Experience**

Hengtai City, Kunming  
Ruibo Financial Center District, Shanghai  
Shenzhen Pingan Finance Center, Shenzhen  
Huawei Software Production Facility, Wuhan  
Manly Villa House, Hong Kong  
La Marina, Macau

# Member Introduction

## **Yandy Tusi**

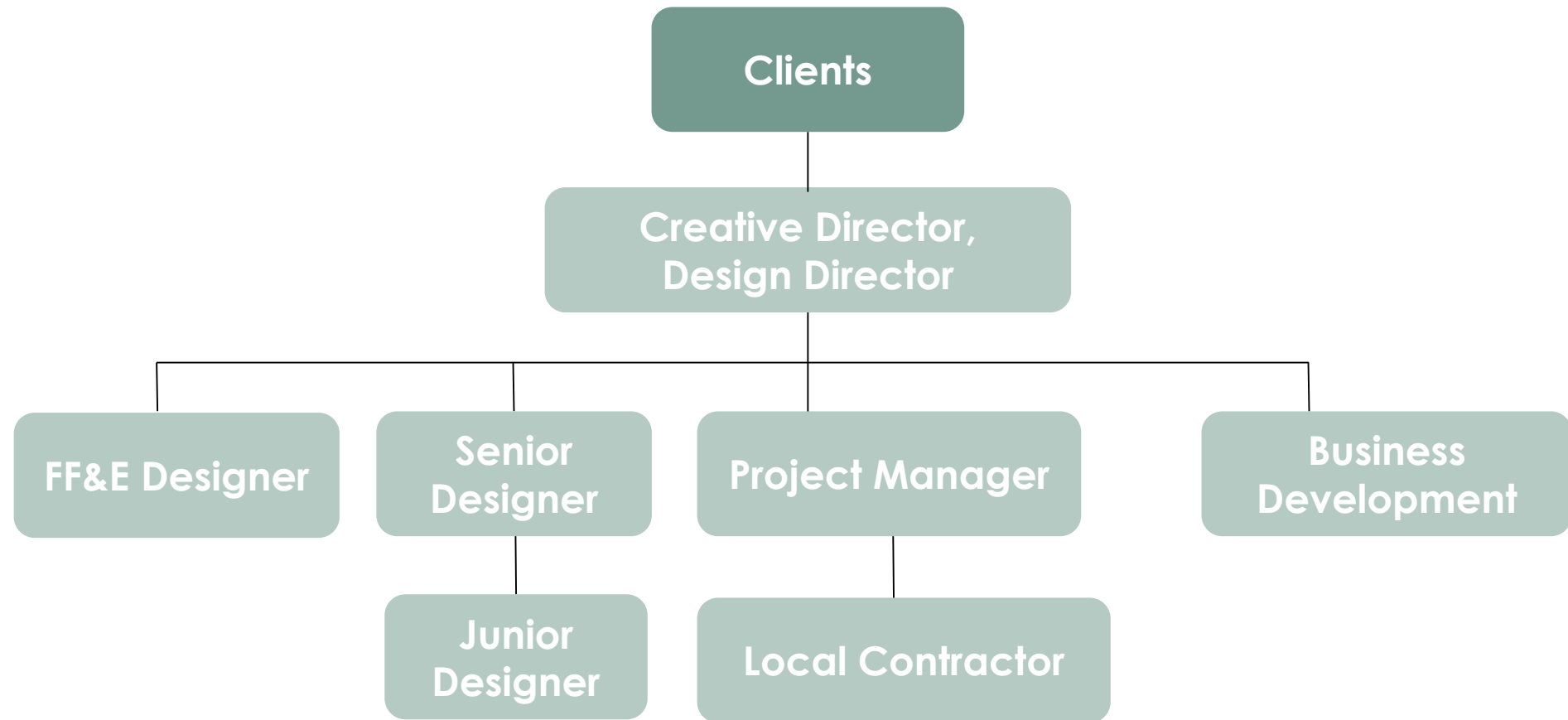
### Marketing Director

A result-oriented professional in business development with exceptional management skills, excellent strategic thinking and high learning capability with excellent problem-solving skills. Worked in interior design and PR industry. She has experience working with different cultures, hard working and successfully providing efficient and quality service to all.

## **Project Experience**

Handling corporate customer for relocation staff such as HSBC, Barclays and UBS etc:  
Cooperate with the relocation team for the expatriates from oversea  
Assisting for residential and commercial project

# Team Structure



# Our Design Concept



- On-Site Meeting
- Measurement and Your requirement



- Budget Estimate
- Minutes from last meeting



- Layout Plan development
- 3D Rendering



- Site hand over(optional)
- Your review and comment



- Construction quotation (optional)
- 5 times On-site meeting



- Drawing Document
- Materials and Lighting List

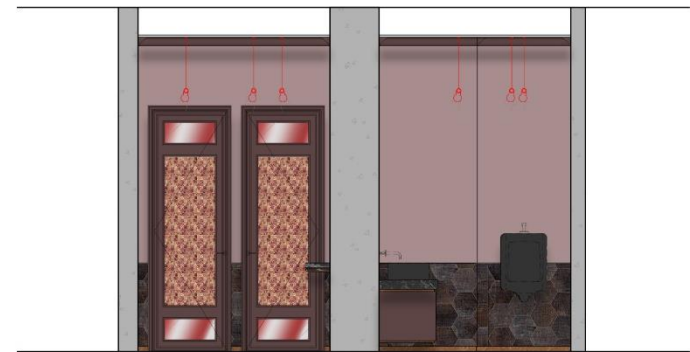
# Project reference – Gangster Restaurant (London)



Provide a place seem like just for gangster meeting restaurant. Research from the gangster movie, modify from the classic style but match with green elements. The gangster-->Gun-->bullet sharp is the design concept. A cone sharp and Shape sharp top to be the seating frame design.



# Project reference – Gangster Restaurant (London)



ELEVATION B

SCALE 1:40

# Project reference – Residential (Way Gin Garden, Tsing Yi Hong Kong)

Living Area



The design concept came from puzzle mix with new and old. This family has a great mind that they re-use many existing furniture. Base on the new concept, we renovated their furniture into the new one. So felt like a puzzle, piece by piece stick together to become one. The kids love to dance and drawing very much so that we mix with the pastel color to make the place more childhood. The hanging cabinet is a whiteboard which can let the kid can draw anytime. A challenging part is a tiny bathroom need to put the shower area and the bathtub. Luckily we found a small one can fit this idea. An extra need is for the cat have his own bed and walkway.



# Project reference – Residential (Way Gin Garden, Tsing Yi Hong Kong)



# Project reference – Residential (Way Gin Garden, Tsing Yi Hong Kong)





# Project reference – Residential (Mei-Po Hong Kong)



Loft and colorful design for a young couple from Canada. They love nature and African style. Many decoration and accessories from different countries that they have travelled. The couple loves life and natural balance. All Eco-friendly material used in this area. Semi-open space for their private parties and to enjoy the “natural environment”.

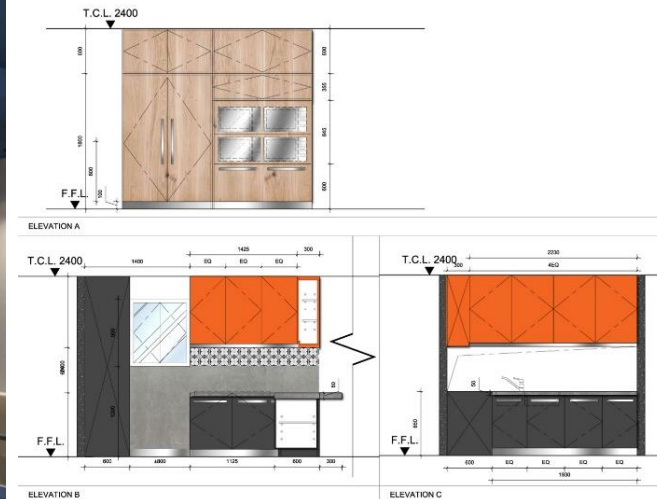


# Project reference – Residential (Mei-Po Hong Kong)





# Project reference – Residential (Mei-Po Hong Kong)



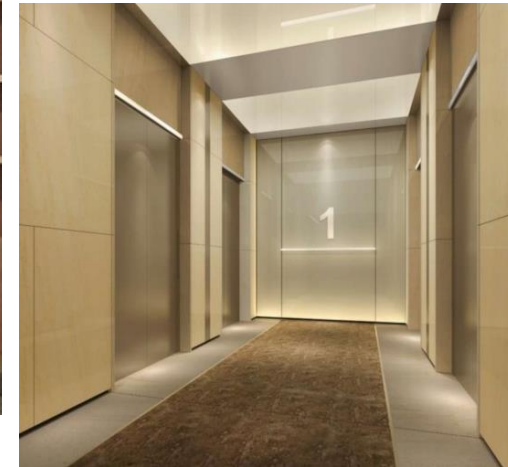
# Project reference – Office Complex (WH)

Lobby



Over 30,000 sq.m. of office complex covering 13 office building at Wuhan. Design idea combined high-end and modern style. Created a stable and mature mood to the clients.

# Project reference – Office Complex (WH)





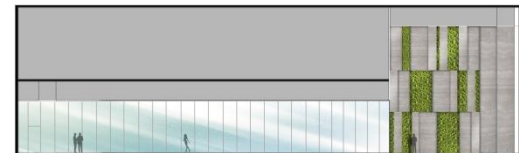
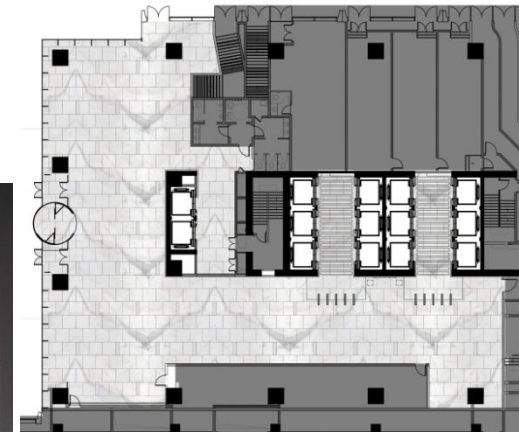
# Project reference – Office Complex (NB)



The combination of timber and stone to create a contemporary, elegant environment. Minimal stone textures for the main wall and floor design, wall feature to show corporate strategy, feature spiral stair visible from outside. Sleek and sophisticated lounge and sitting areas. A mix of neutral and warm textures feature timber wall and ceiling effect, floor, walls classic neutral tones. Feature green wall with reception desk contemporary design.



# Project reference – Office Complex (NB)



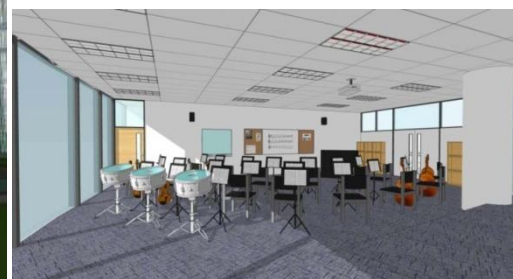


International School new set-up in Mainland China, kids to teenage. Over 30,000 sq.m. covering 3-floor levels, sky garden, large garden playground and two football field. This design idea comes from rainbow color; an enormous library can let the kid learn more from it. The rainbow color staircase goes through 3 floors to create a united approach to all student from a different country.





# Project reference – School (SZ)



# Project reference – School (SZ)





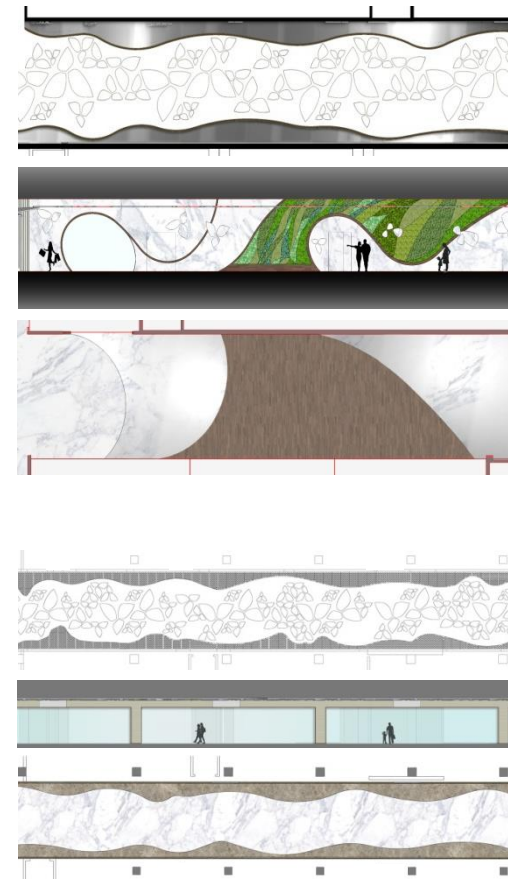
Ruibao Lujiazui, Shanghai



New Shopping Mall renovation of all the corridor and shop front design. Over 520,000sq.m. Mall corridor created by four seasons: Winter, Spring, Summer, and Autumn. Each zone will give you the different experience when you walk through the shopping mall. This project concern greener environment to match with their real lovely green garden. So the design comes up with the plant from outside to inside, grow different color and character of the plant to match with four seasons scene.

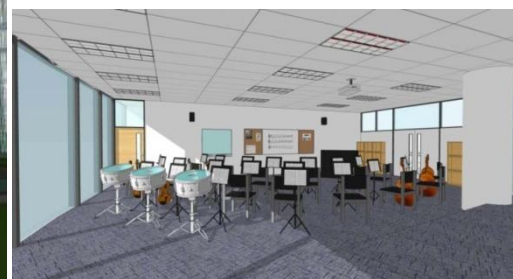








# Project reference – School (SZ)



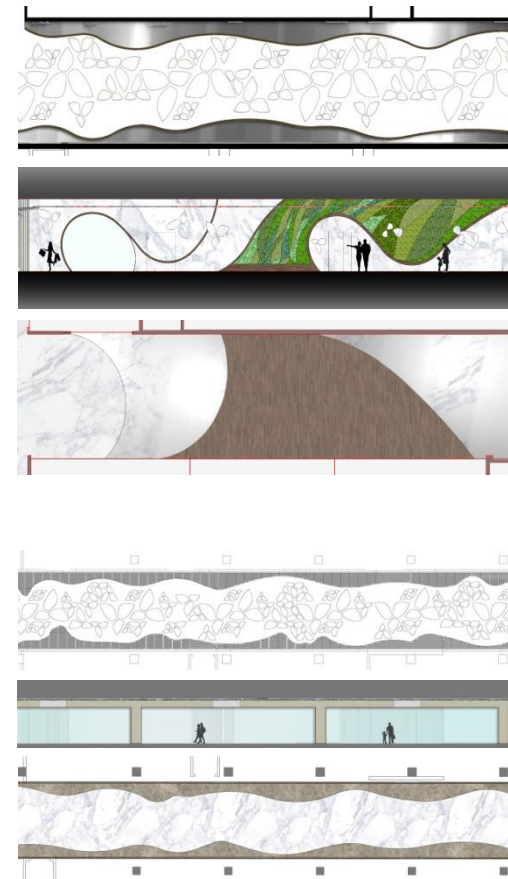
Ruibao Lujiazui, Shanghai



New Shopping Mall renovation of all the corridor and shop front design. Over 520,000sq.m. Mall corridor created by four seasons: Winter, Spring, Summer, and Autumn. Each zone will give you the different experience when you walk through the shopping mall. This project concern greener environment to match with their real lovely green garden. So the design comes up with the plant from outside to inside, grow different color and character of the plant to match with four seasons scene.









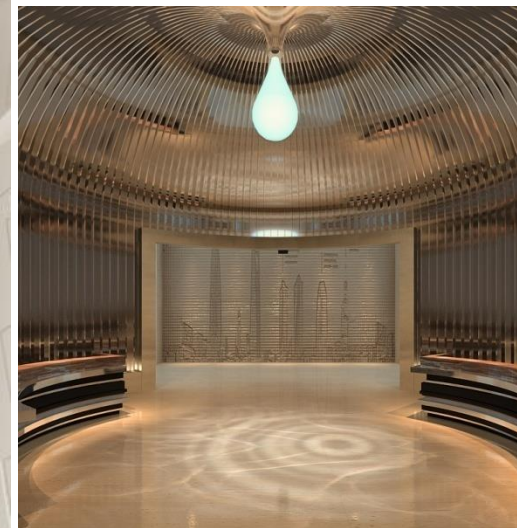
# Project reference – Sales Office (CS)

Sale Office Design, ChangSha



Sales Office with Greenland Property. Base on the geographic of Changsha. River and water are the primary material to develop. Free flow of water and raindrop shape appear on every space you walk, though. Combine with metallic, provide a real experience when you walk through the water elements.







# Project reference – KTV (SH)

Good time KTV, Shanghai

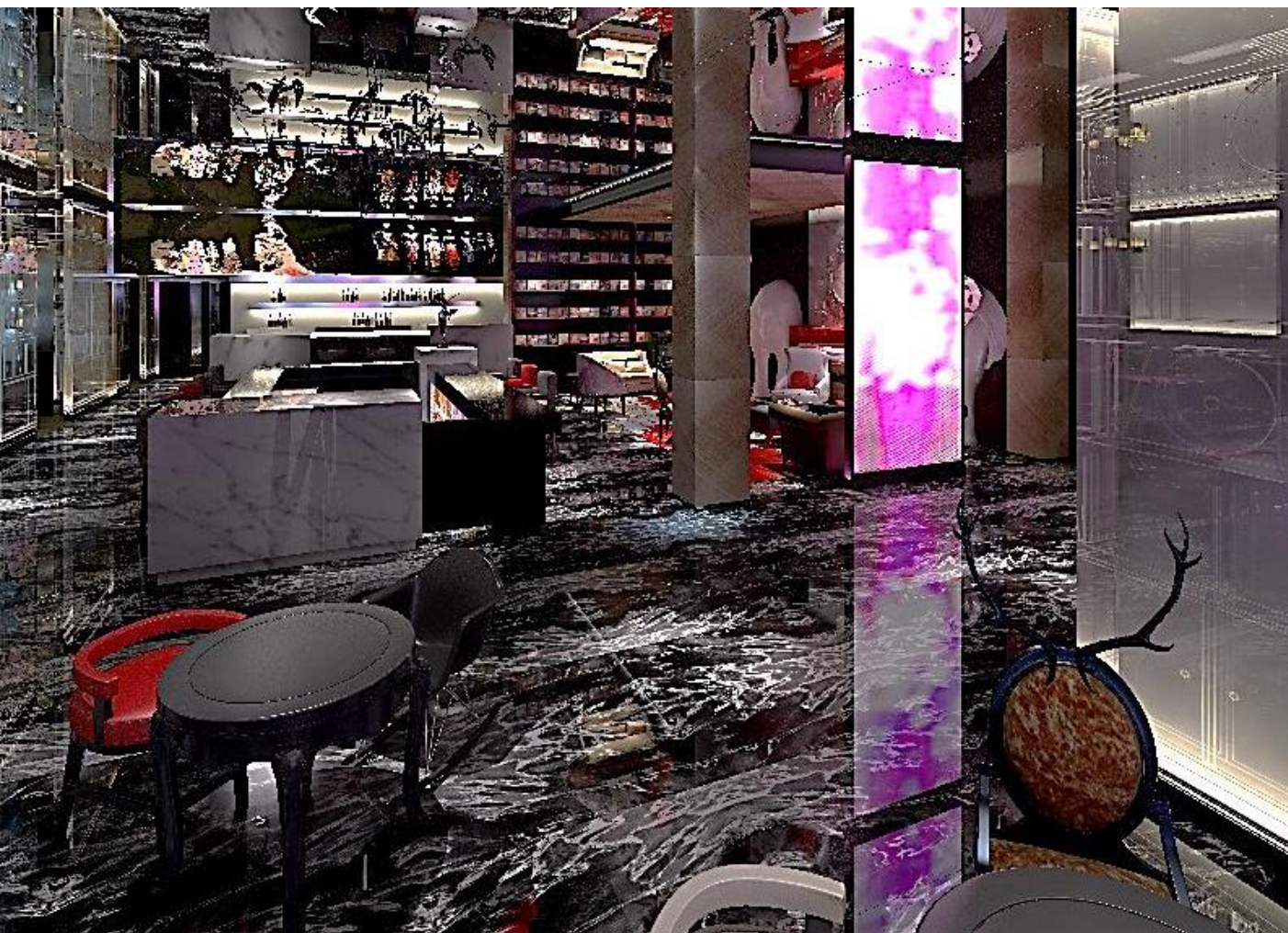


The concept came from maximalist mix with circus and record store. Now-a-day KTV needs many hot points to take a photo and resting area. The waiting area not only provides a picture point everywhere but also you can enjoy and search for music old brand or singer's record. Space planning separate 4 zones, one is the waiting area, show stage, wine bar, and reception. Whole two floors separate 4 zones of 60's, 70's, 80's and 90's super singer let the customer come every time has a different experience.





# Project reference – KTV (SH)





# Project reference – KTV (SH)



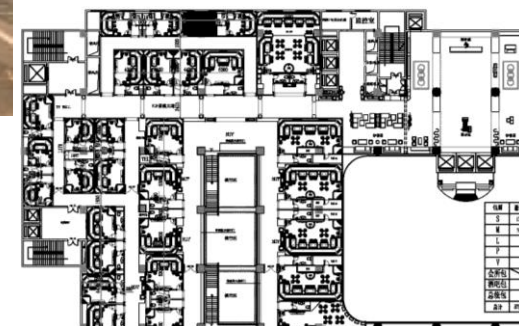
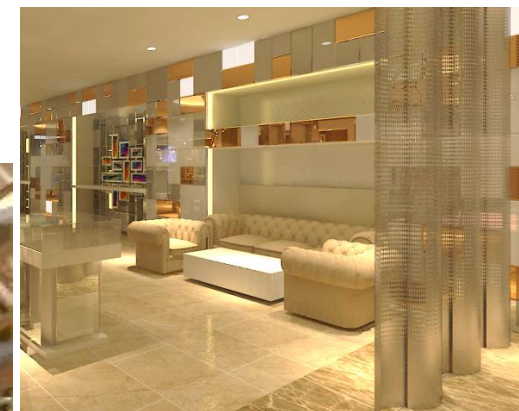
# Project reference – KTV (Haikou)



Different with other KTV. This one wants to make the mood combine shopping and KTV style. Different interactive program show the latest fashion show and coffee/wine episodes to let the customers learn more while they are waiting. In front of the reception area provide a shopping area for latest fashion and product. Half made by the hotel feeling corridor design for the business area. Half made by animated shape corridor design for a younger group.



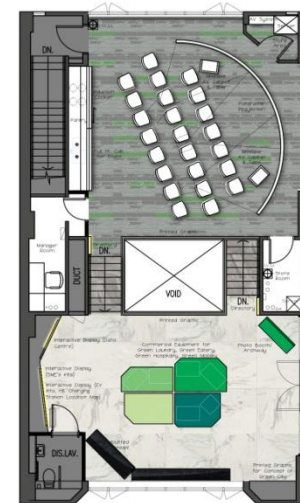
# Project reference – KTV (Haikou)





# Project reference – KTV (Haikou)





2nd. FL. PLAN



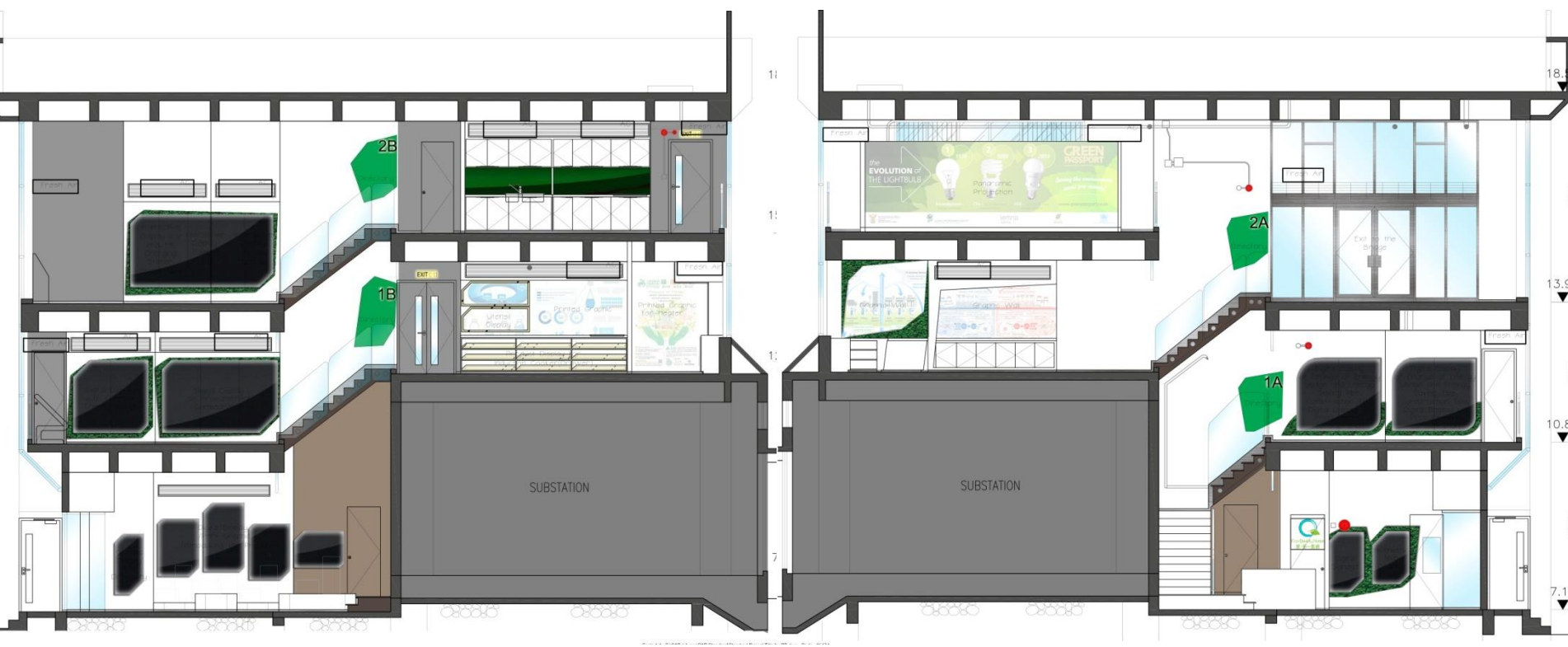
1st. FL. PLAN

New concept store at HK, mainly attracts more citizen knows more about energy saving and what is green energy, Over 3-floor retail area included purchase area and education area. Use interactive system combine with interior design. The big challenge with this project.







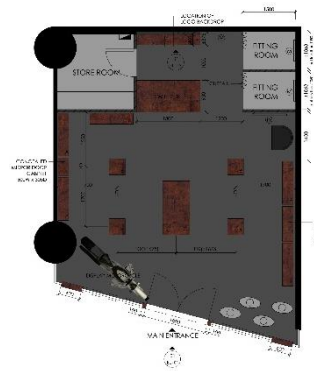


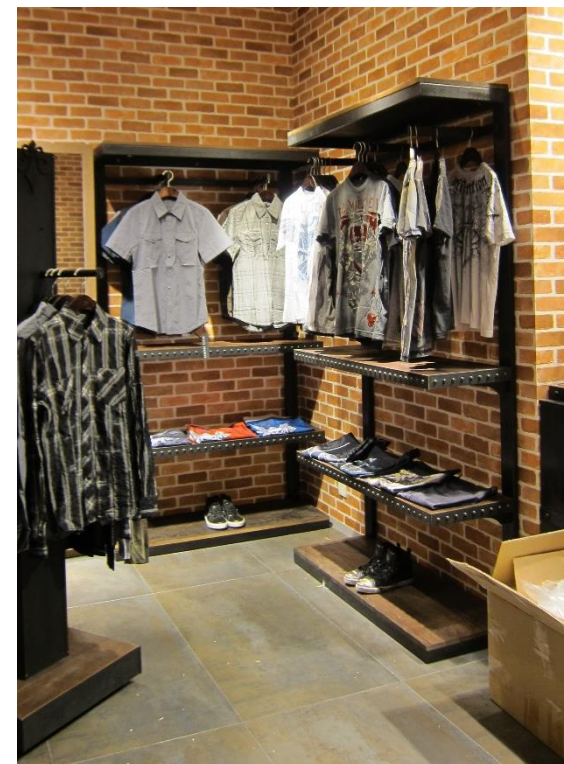


This clothing company is mainly for workers; Loft style is very suitable.

The concept of the construction worker, which to show the rough and hardworking, so we further strengthen the Loft style atmosphere.

The use of red brick is because it is one of the most robust materials, coupled with rivets and I shape iron to highlight the texture of the Loft style. Rusty surface and motorcycles decorated in exchange for wild feeling, underscoring the theme of the shop. Wiping out of the clothes, you can reproduce the scene of the work of men. Set signs in the ceiling, indicating the ownership of the site and all the equipment.











# Project reference – Retail

## Berlin glasses shop Retail Project, Hong Kong



The company monopoly vintage glasses, the concept came from the ancient European master for a lens and a screw of the meticulous and intentions. To bring out the classical taste of the glasses, use of the British Museum and Baroque style, but to meet the modern palate, so weakened the Baroque style bold effect, only to retain the details of the frame.

Show the window around the imitation of the oil painting frame, put the glasses felt like an artifact, bring out the characteristics of goods. In the golden frame mix with the backlights create the gorgeous effect, forming a relaxed but noble feeling.







Broadway Shop at Tsim Sha Tsui I Square Mall, HK



Traditional electrical product shop in Hong Kong, they need a new concept design for attracting the more younger customer. This project gives them a unique tour experience for the client. Space orientation. The young, energetic and modern design is the primary mission of this project.





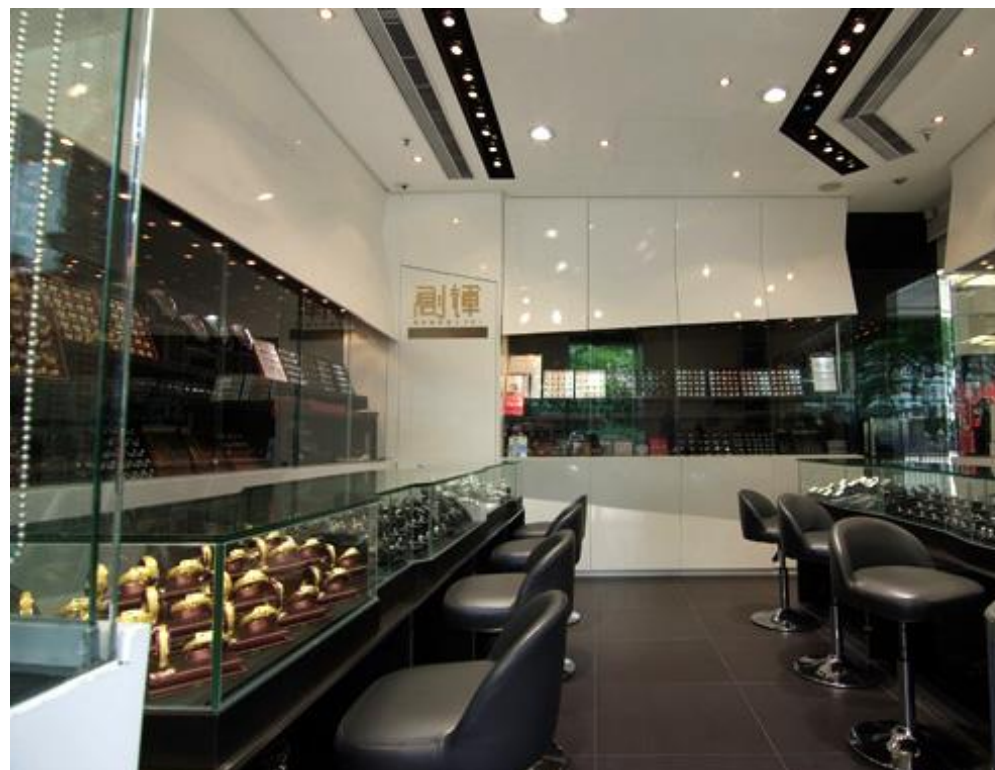
# Project reference – Retail

Chong Fai Jewelry, HK



Shop idea came from the diamond shape. The triangle shape always appears in the mine or jewelry. Bold this up on the facade wall. Different from the traditional Hong Kong jewelry shop. Use the black and white color into the interior area. Can show the product more efficiently.





# Project reference – Office (Hong Kong)

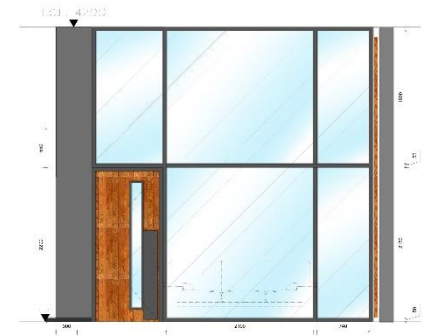
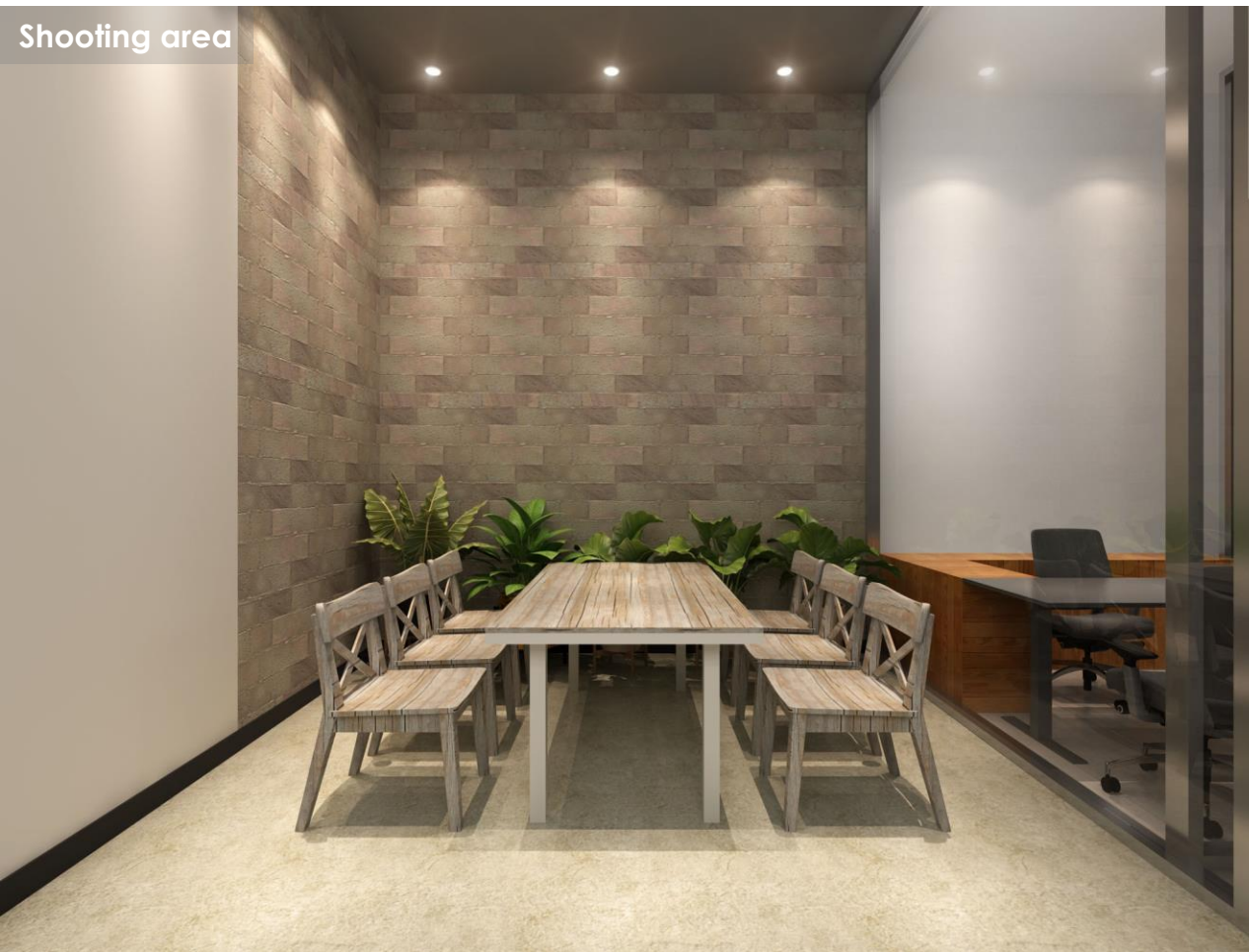


Cozy and Loft style of Design. A quick project only used two weeks for design and half month of construction. The client loves this design very much; that's why we didn't need to revise it much: A office of a Model Agency, the area of 1500sq.ft., the 4200mm height of the ceiling, A 340sq.ft semi-open balcony for brainstorm and BBQ. The most exciting part was the floor tile, and wooded ship deck made furniture finishes. Yes, that was initiated from a ship. Many ships are too old, or for war use only, but there are many materials from its inside can be re-used, such as wood floor, iron, fabric, etc. We used these wooden deck into the coffee table top, sofa back, reception finishes and part of the wall and door finishes. Every material should have a second life, let them have the chance.



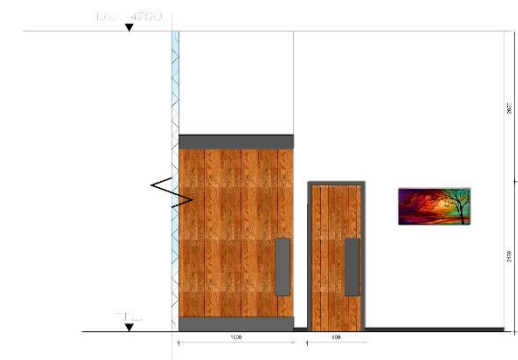


# Project reference – Office (Hong Kong)



ELEVATION C

SCALE 1:25

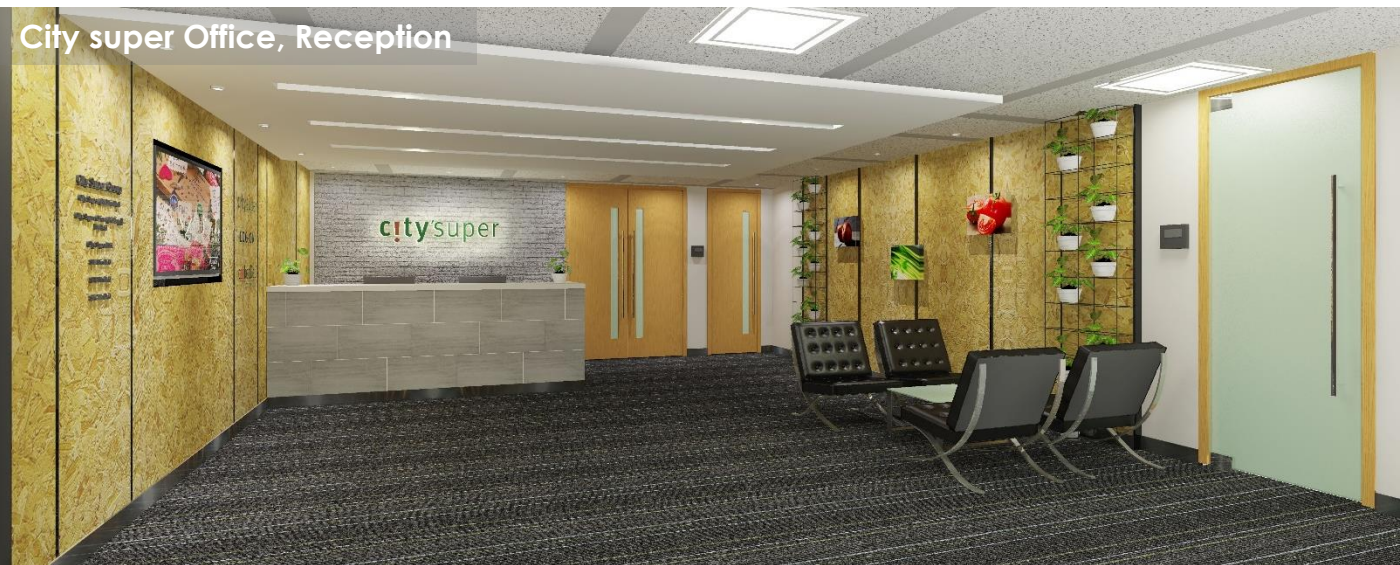


ELEVATION D

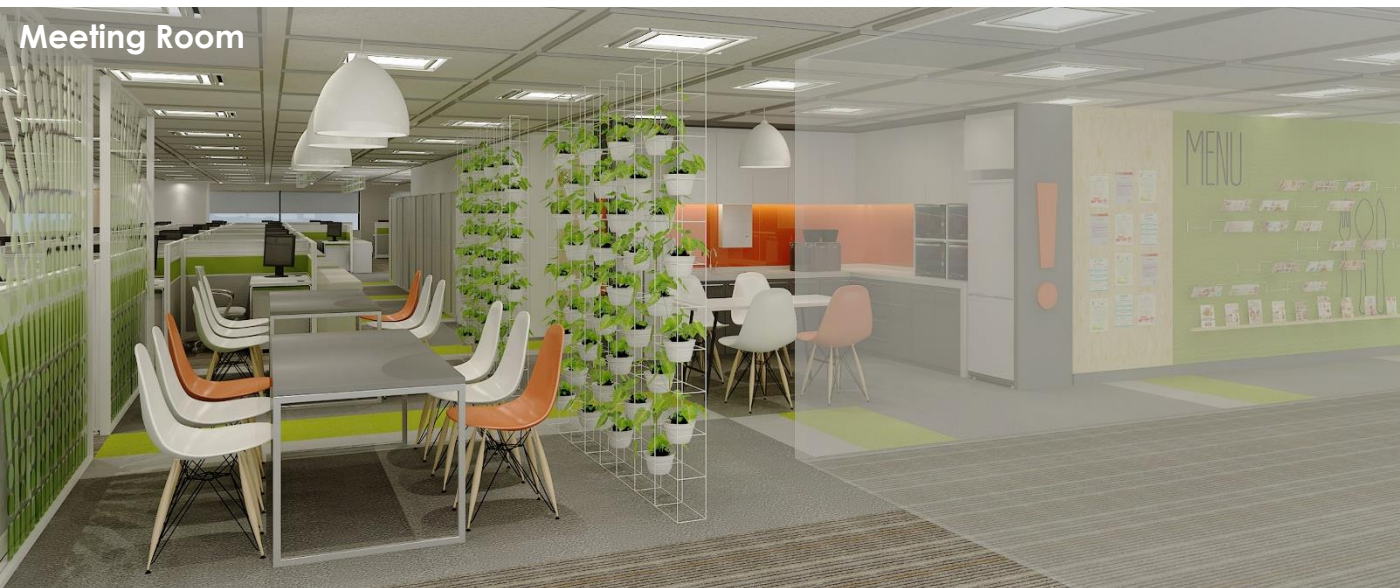
SCALE 1:25



# Project reference – Office (Hong Kong)

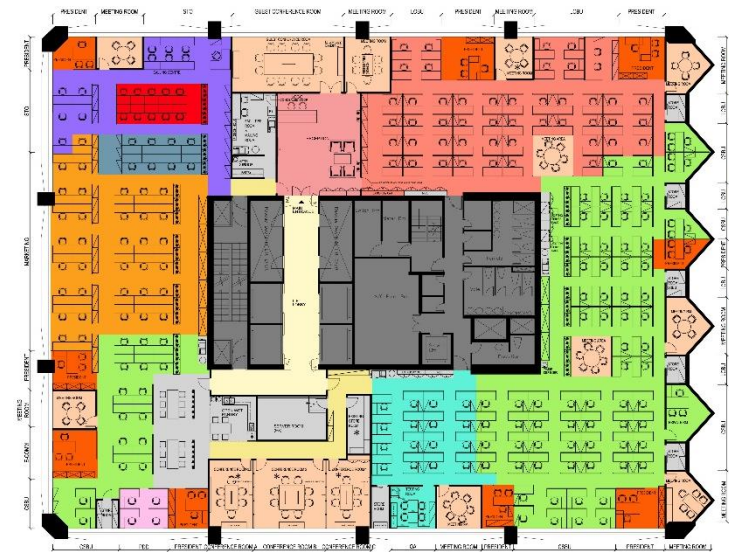


The office can be eco-friendly too. In addition to using the recycle 100% materials. We can add so many plants at the office. The plants are not just for decoration. We can plant the organic food at the office so that every staff can eat the fresh vegetable every day. And educate the people how to plant, and cherish the food. This project concept is plant society, in the forest, every plant has different length and different location. The Bigger tree usually at the middle part. The shortest one is located at the periphery. On the other hand, some of the plants need to live by the other plant like vines. So we use the plants to separate the different zone of the office. At the meeting area and pantry, we will a plant wall to separate the place. At the open space of the staff area, we will plant some on the top of the false ceiling.



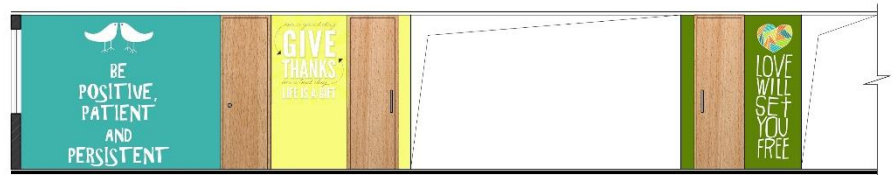
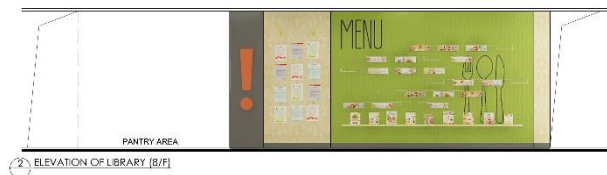


# Project reference – Office (Hong Kong)





# Project reference – Office (Hong Kong)



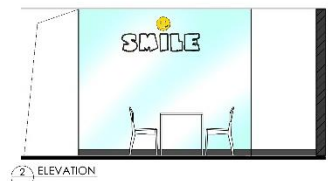
1 ELEVATION OF MURAL WALL (8/F)  
SCALE 1 : 50



2 ELEVATION OF MURAL WALL (8/F)  
SCALE 1 : 50



ELEVATION OF LOGO WALL (9/F)



ELEVATION



ELEVATION

# Project reference – Office (Hong Kong)

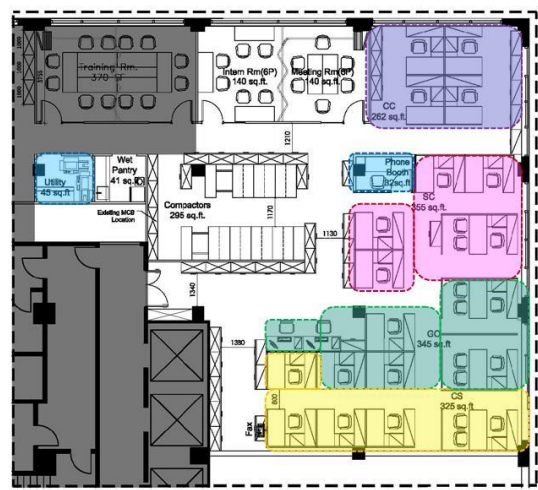
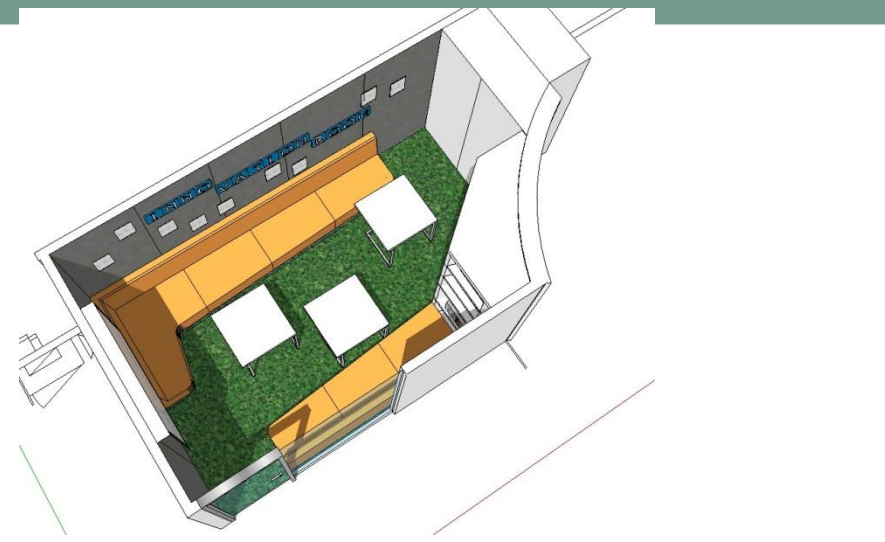


Pfizer Office in Hong Kong. Renovation for many different areas for relocates separate staff area. Clinic area, Staff brainstorm area. The clinic idea mainly doesn't want to scare the elderly and children. Merge with sunshine and garden idea. The clinic becomes more joyfully. The brainstorm area creates a mood that, the staff like sitting in the garden, enjoy the mother nature and relaxing way to let them more creative.

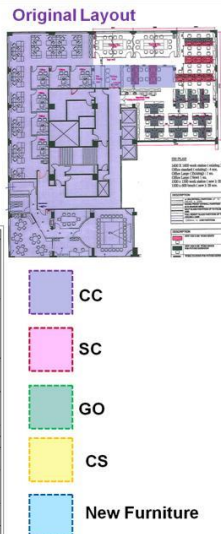




# Project reference – Office (Hong Kong)



Description	Drawing	No.
Staff 1500x1500 (Existing)		15
Manager 1600x3000 (Existing)		4
Hot Desk 1200 x 600 (Existing)		2
Hot Desk 1200 x 600 (New)		1
Headcount		28P
Sealcount		36P
CS - 1 MGR Seat, 4 Staffs		5
GO - 2 MGR Seat, 3 Staffs		7
CC - 4 Staffs		4
SC - 1 MGR Rm, 4 Staffs		5
Intern Rm (BP)		1
Meeting Rm (BP)		1
Utility		1
Compactors		8.5
Wet Pantry		1
Phone Booth		1
Total Area		2120 sq.ft



## Project reference – Office (Hong Kong)

Vivaki, Starcom like a bee company, mix with different small business together to grow up be a vast network. What mainly issue needs to fix is separate the exact area for the various small company. Monotone is the most suitable for this company. The white wall ideal for every company has small differences with the others.

Vivaki Office Project, Hong Kong





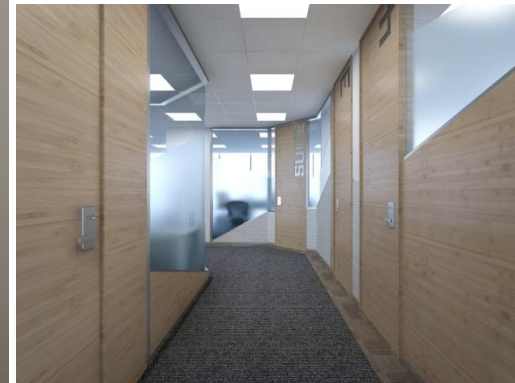


Premier Asia Office Project, Shanghai



First business center Office set up at Shanghai. Their customer focuses on the young or new company. So the style is made of modern and clean. But not in the commons area. Overall design idea comes from a financial chart, cross line hidden on the floor, wall and false ceiling pattern. Common area uses more wooden finishes to make the mood more friendly. Also, the map shows the business center office in the different country so that every company can discuss and explore more opportunity for their business.







Renovation office project at GZ, HK, and SH, A big company combined by different small brand, they concern carefully with their right space area, how to share the common area and the various name has different corporate color and style. Here provide a very modern and unique shape of carpet and false ceiling to match with their culture. Different but can be together.



# Project reference – Office (GZ)



# Project reference – Office (Hong Kong)

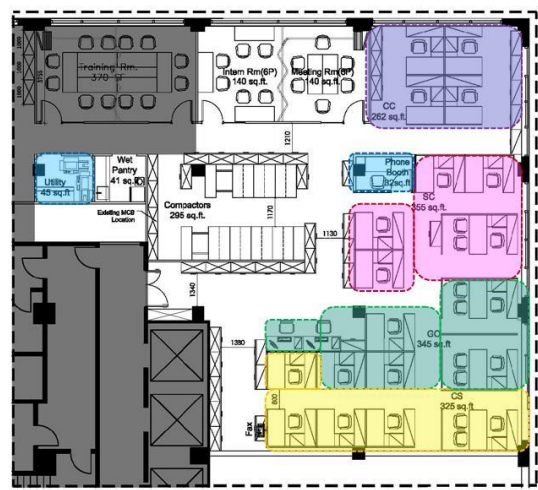
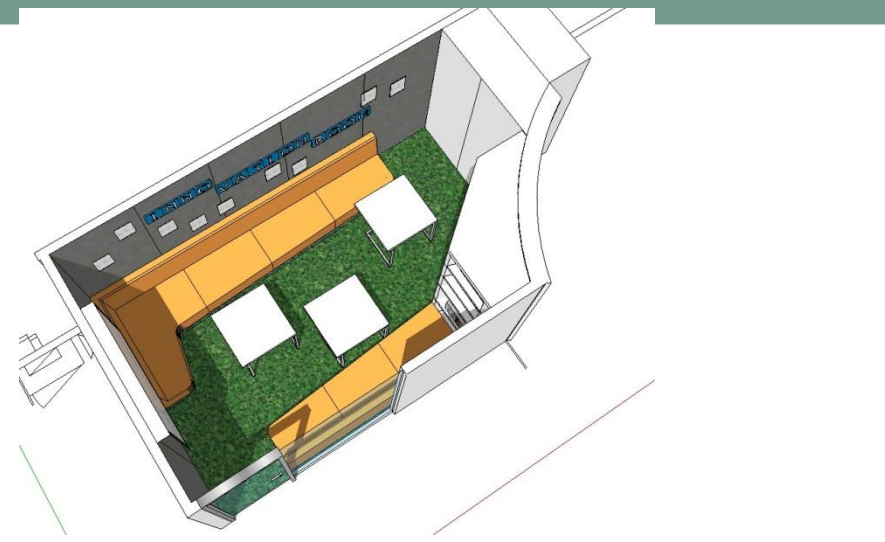


Pfizer Office in Hong Kong. Renovation for many different areas for relocates separate staff area. Clinic area, Staff brainstorm area. The clinic idea mainly doesn't want to scare the elderly and children. Merge with sunshine and garden idea. The clinic becomes more joyfully. The brainstorm area creates a mood that, the staff like sitting in the garden, enjoy the mother nature and relaxing way to let them more creative.





# Project reference – Office (Hong Kong)



Original Layout

Description	Drawing	No.
Staff 1500x1500 (Existing)		15
Manager 1600x3000 (Existing)		4
Hot Desk 1500 x 600 (Existing)		2
Hot Desk 1200 X 600 (New)		1
Headcount 28P		
36P		
CS - 1 MGR Seat, 4 Staffs		5
GO - 2 MGR Seat, 3 Staffs		7
CC - 4 Staffs		4
SC - 1 MGR Rm, 4 Staffs		5
Intern Rm (BP)		1
Meeting Rm (BP)		1
Utility		1
Compactors		8.5
Wet Pantry		1
Phone Booth		1
Total Area		2120 sq.ft

Legend:

- CC
- SC
- GO
- CS
- New Furniture

## Project reference – Office (Hong Kong)

Vivaki, Starcom like a bee company, mix with different small business together to grow up be a vast network. What mainly issue needs to fix is separate the exact area for the various small company. Monotone is the most suitable for this company. The white wall ideal for every company has small differences with the others.

Vivaki Office Project, Hong Kong

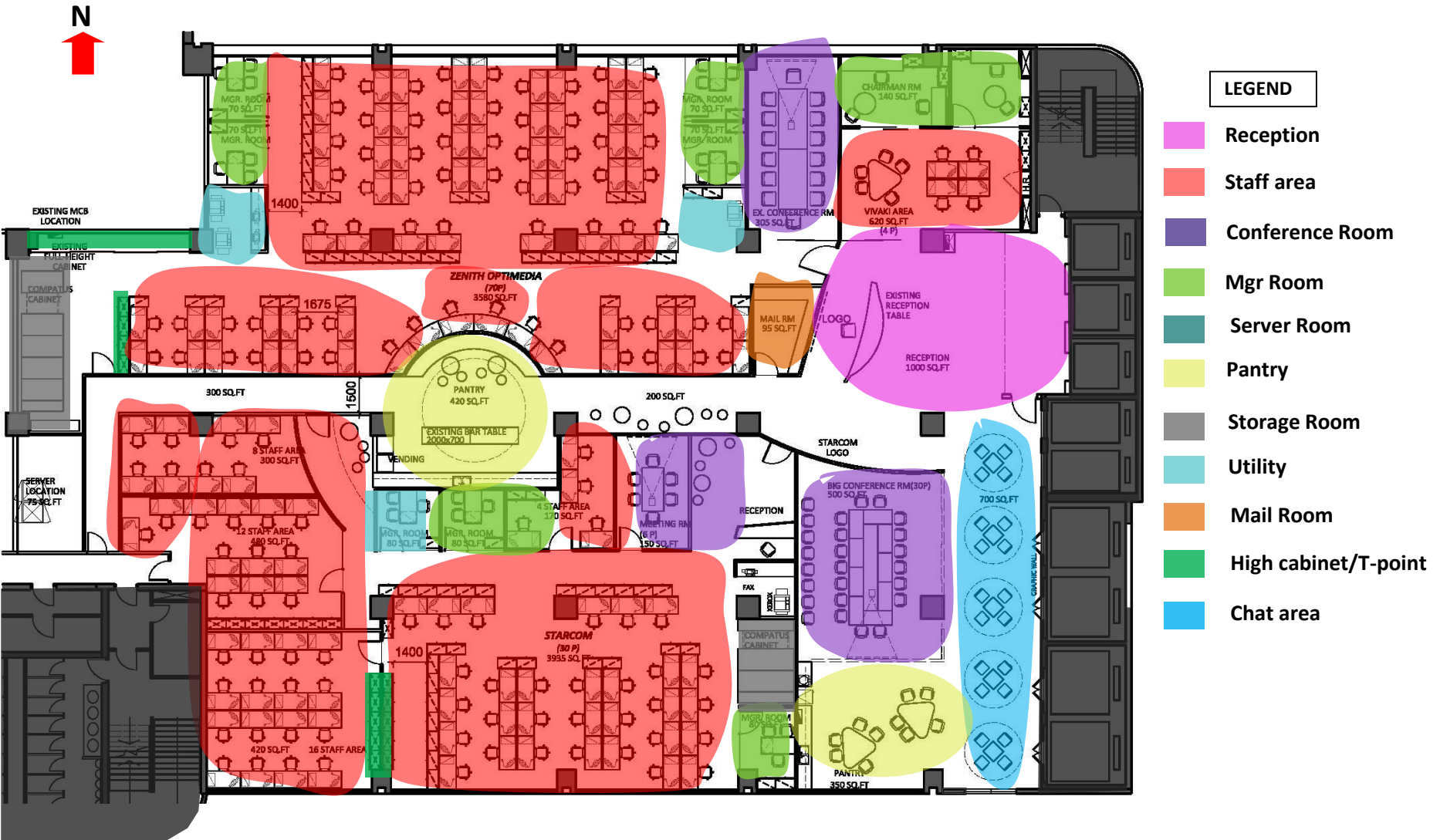




# Project reference – Office (Hong Kong)



## Project reference – Office (Hong Kong)



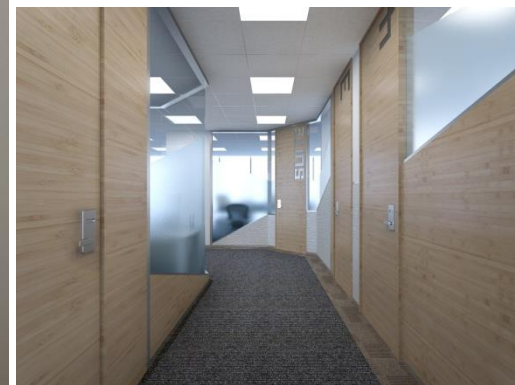
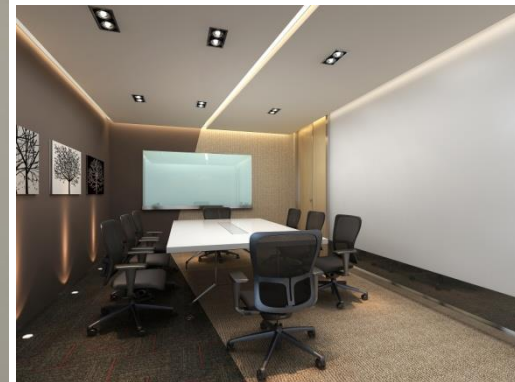


# Project reference – Office (SH)

Premier Asia Office Project, Shanghai



First business center Office set up at Shanghai. Their customer focuses on the young or new company. So the style is made of modern and clean. But not in the commons area. Overall design idea comes from a financial chart, cross line hidden on the floor, wall and false ceiling pattern. Common area uses more wooden finishes to make the mood more friendly. Also, the map shows the business center office in the different country so that every company can discuss and explore more opportunity for their business.







Renovation office project at GZ, HK, and SH, A big company combined by different small brand, they concern carefully with their right space area, how to share the common area and the various name has different corporate color and style. Here provide a very modern and unique shape of carpet and false ceiling to match with their culture. Different but can be together.

# Project reference – Office (GZ)

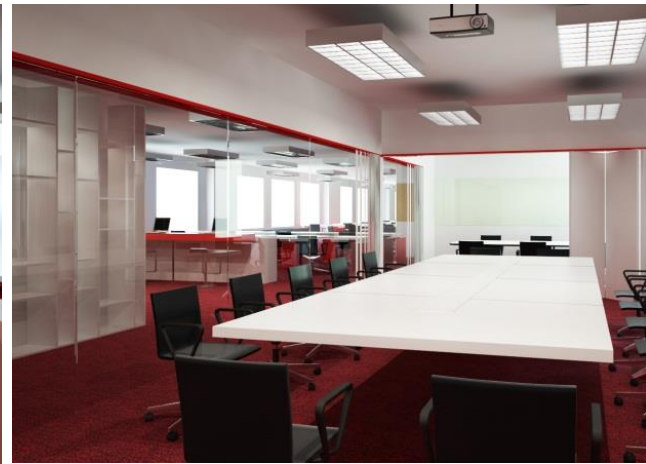




Maxx Office Project, Hong Kong



Maxx company use the idea of the puzzle. It is their logo. Bold up the puzzle sharp to go through the whole area. And the Feng Shui issue needs to make the carpet to be red. So the red frame will go through every meeting and conference room.







Broadway Office Project, Hong Kong



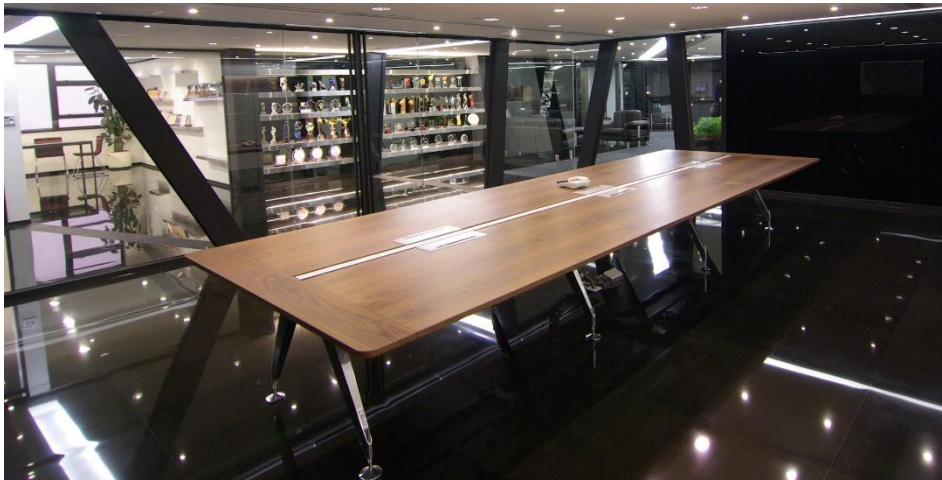
Five-floor factory becomes Broadway office and storage room. Top 2 floor is office area. Mix with the Feng Shui issue. The bold black line goes through the ceiling to the floor finishes. We create the new image for every Broadway shop. Black and white mix with cyber mood is this project idea.



## Project reference – Office (HK)



# Project reference – Office (HK)





L'oreal Showroom Project, Hong Kong

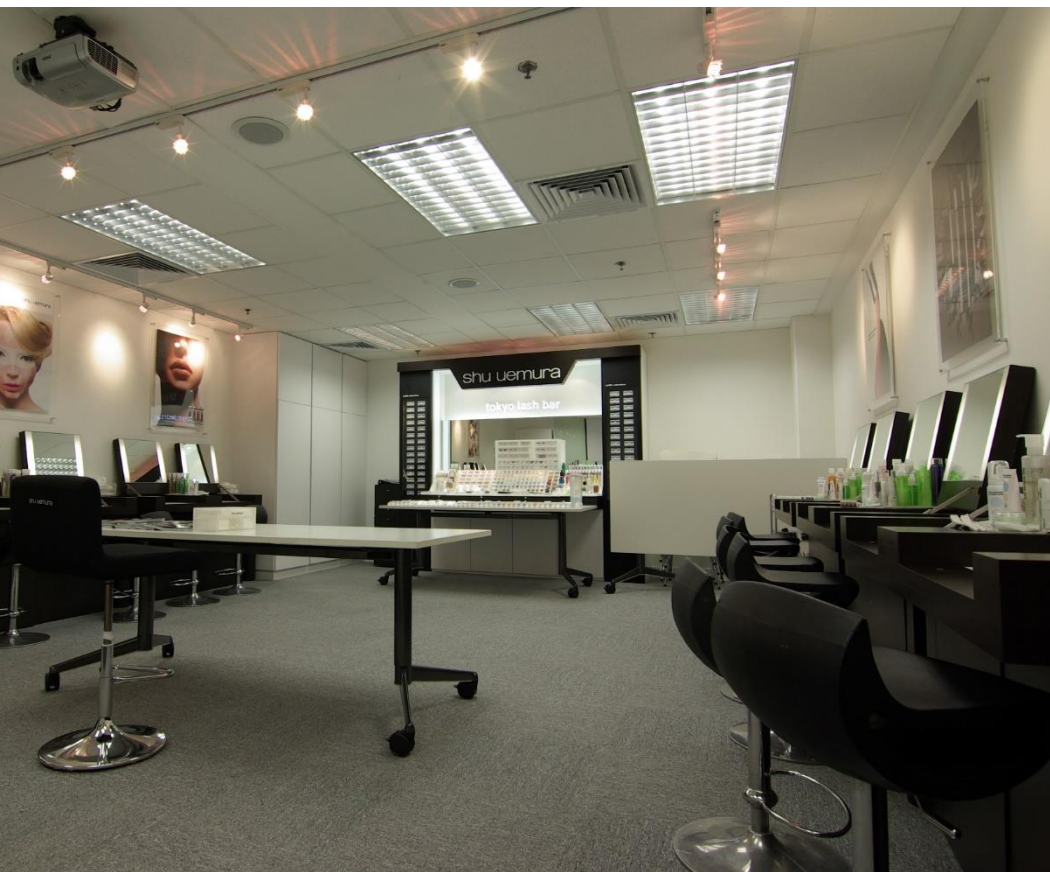


L'oreal was looking for a new idea for their showroom. Only for the V.I.P. visit. Showroom included product showcase, training room of different brand. The mood is rough but Musume. Every product shows in a single box. Look like an art piece. A rough ceiling and wall finish have a big contrast with the project. This idea will go through every room.





## Project reference – Office (HK)



# Contact

T: +852- 3569- 8194

M: +852- 9136-7886

M: clovia@2plus4.com

M: 2plus4designltd@gmail.com

W: <http://www.2plus4.com/>

FB: <https://www.facebook.com/2plus4design>

IG: 2plus4 interior design Ltd