

I N T R O D U C I N G

# CEM-ROCK™

B U I L D W I T H C O N F I D E N C E

W W W . C E M R O C K . I E

DISTRIBUTED BY



# Introduction

Cem-Rock™ is an eco-friendly, light weight, high strength magnesium cement board with safer, easier and faster application suitable for both interior and exterior use. It can replace traditional building boards and can be used as an alternative to chipboard, plywood, OSB, fibre cement board, calcium silicate board, and gypsum board. Offering a fresh innovative building board the construction industry has been longing for. Best of all Cem-Rock™ has the environment in mind and carries an A1 fire rating, tested to EN 13501 standard as well as a CE certification.

**CEM-ROCK™**





Address: University of Limerick, Ireland  
Development: Glucksman Library  
Application: Reinscreen Cladding Substrate Board

# CEM-ROCK™



## Class A1 fire rated product

- No plywood, OSB or drywall panel can claim this.
- Releases water vapour during a fire event, helping to cool and contain the fire
- It can easily achieve up to 2 hour fire ratings
- The building board of dreams for fire officers

## Strong and durable

- Stronger than gypsum boards
- Stronger than fibre cement products
- Lighter than fibre cement products
- Safe to work with
- Extremely user friendly
- Due to the aforementioned characteristics Cem-Rock™ increases a building's life span
- Easy to cut and score
- Pliable (3 meter bending radius)

## Resistant properties

- Impervious to water
- Moisture resistant
- Dimensionally stable when wet
- Structurally stable when wet
- Does not feed mildew
- Does not rot or mould
- Termite resistant
- Contains zero foodstuff

## Environmentally friendly

- Contains no formaldehyde
- Contains no fly ash
- Contains no toxins
- Does not off-gas
- Carbon neutral product
- Completely recyclable
- Captures CO<sub>2</sub> during the curing process
- Low energy manufacturing process
- No carcinogenic dust
- Ideal for chemically sensitive people in the home environment



A photograph of a modern building facade, featuring a grid of windows and light-colored panels. The building is viewed from a low angle, looking up. The sky is visible in the background, showing some clouds. The text is overlaid on the image.

“Cem-Rock™ will undoubtedly play a major role in a safer, easier, faster and more environmentally friendly construction future”

TOMMY O'NEILL  
STEEL FORMED SECTIONS



**CEM-ROCK™**

**STRONGER  
SAFER  
FASTER**

Cem-Rock™ is a multipurpose board that can line everything from your exterior wall to your interior partition walls.

Cem-Rock™, which has experienced a 400% upsurge in sales since its introduction, is a truly innovative building board suitable for both exterior and interior purposes.

Address: Ballina, Co. Tipperary  
Development: Private house  
Application: External Render System Substrate



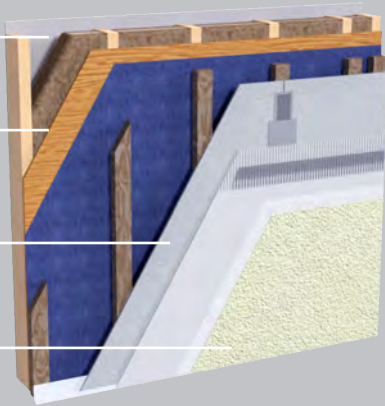
# CEM-ROCK™ Typical installations

Clients



External render carrier board

- Cem-Rock™ as dry lining board
- Structure by others
- Cem-Rock™ as render carrier board
- Approved render system



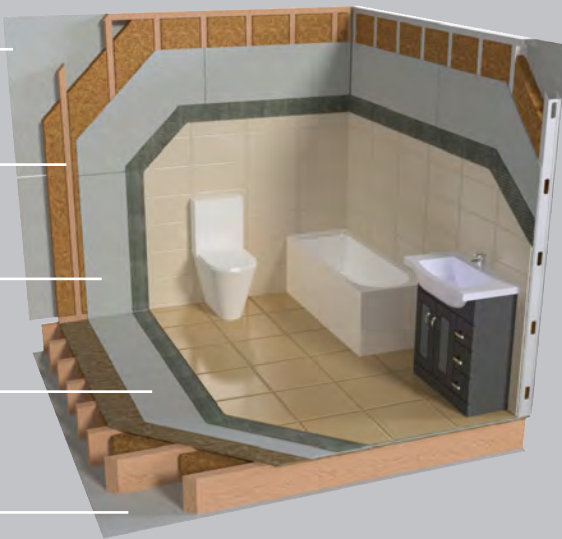
Drylining and fire rated partition

- Cem-Rock™ as dry lining board
- Frame by others
- Cem-Rock™ as dry lining board
- Primer
- Paint finish



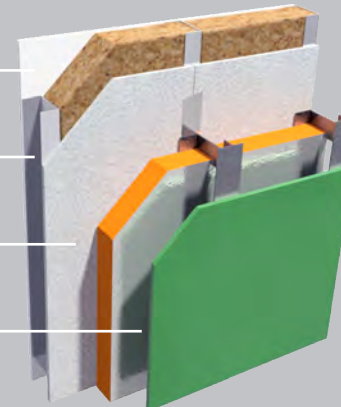
Tile backer board and drylining

- Cem-Rock™ as dry lining board
- Frame by others
- Cem-Rock™ as tile backer
- Cem-Rock™ (6mm) as floor underlay
- Cem-Rock™ as ceiling board



Rainscreen backer board

- Cem-Rock™ as dry lining board
- Structure by others
- Cem-Rock™ as backer board
- Rainscreen cladding system



# Cem-Rock™ Product Datasheet

Provides a flexible, fire resistant, easy to cut and work with building board suitable for a variety of applications including, but not limited to following:

- substrate for exterior render systems in timber frame and steel frame structures
- the ideal board for internal applications such as tiling, dry lining and wet areas applications

Physical properties	
Nominal Dimensions	2400x1200x12* mm
Dimensions tolerance (EN 12467:2012)	Level 1 (+/- 3mm)
Thickness tolerance (EN 12467:2012)	Level 1 (+/- 0.6mm)
Average weight	11.6 kg/m <sup>2</sup>
Average density (EN 12647)	950 kg/m <sup>3</sup>
Bending strength (EN 12647)	≥ 6.2 MPa
Bending radius	2.0 m
Modulus of Rupture Flexural Resistance	⊥ 10.3 N/mm <sup>2</sup> (Class 2)
	∥ 8.5 N/mm <sup>2</sup> (Class 2)
Reaction to fire classification (EN 13501-1:2013)	A1 (non-combustible)
Water Vapour Transmission	1,975 g/hm <sup>2</sup>
Water vapour diffusion coefficient μ (EN ISO 12572)	54
Thermal Conductivity (EN ISO 10456)	0.39 W/Km

\* 6mm, 8mm and 10mm thickness also available



Suitable for:

- Timber frame structures
- Steel frame structures

Typical applications:

- Render receiver board
- Tile backer board
- Floor underlayment
- Internal drylining
- Soffits and ceilings

Also suitable for:

- Rainscreen cladding backer board
- Fire rated partitions
- Modular buildings

Properties:

- A1 Fire resistant
- Moisture resistant
- Weather resistant
- Impact resistant
- Easy to cut with utility knife
- Easy to handle (light weight)

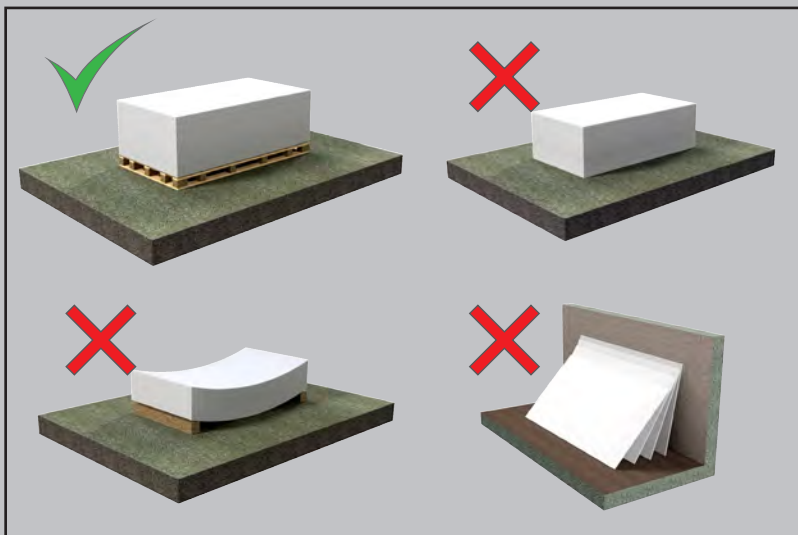
Fire rated build-ups

Buildups of up to 90min for external walls are available. Buildups of up to 120min for internal partitions are available.





## Storage



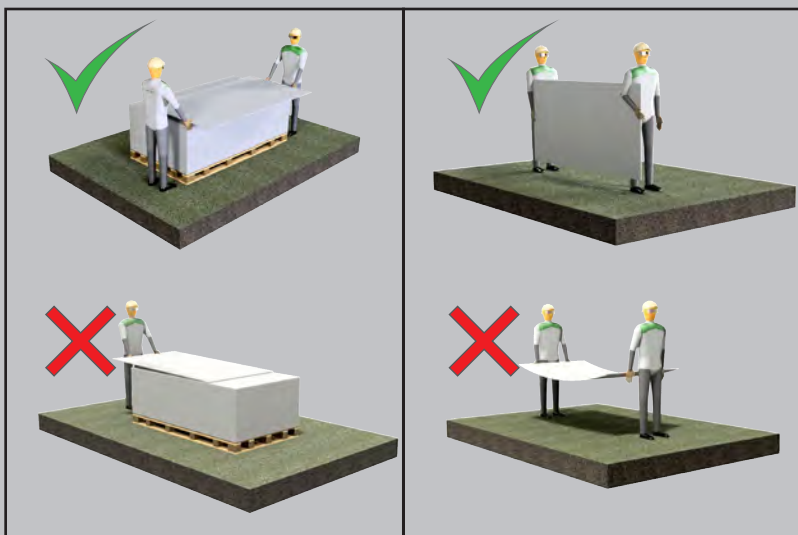
The base to store the boards has to be strong enough to support them.

Do not store the boards directly on the ground. Do not store the boards vertically.

Boards have to be protected from moisture before installation.

If the boards get wet, they have to be dried before they are installed.

## Handling



Boards must be carried upright.

Take care not to damage corners and edges when setting the board down.

Two person handling only.

## Cutting

Cem-Rock™ to be cut using:

- Utility knife (score & snap)
- Hand saw
- Diamond disk grinder
- Concrete disc grinder
- Diamond blade saw

Safety measures:

Appropriate PPE equipment to be worn when working with Cem-Rock™ boards.

## Fixings

Only rust proof, alkali resistant fixings to be used to install Cem-Rock™ boards. Wood and gypsum screws are not recommended.

## Technical details

Cem-Rock™ building boards come equipped with all the appropriate certifications and application procedures.

For any technical queries or to receive the appropriate method statements please contact our technical team at Greenspan.

B U I L D   W I T H   C O N F I D E N C E

C H O O S E

**CEM-ROCK™**

W W W . C E M R O C K . I E